



ARISTOTLE UNIVERSITY
OF THESSALONIKI

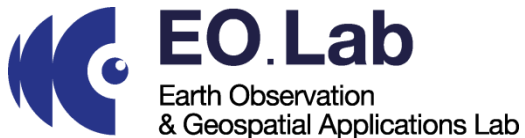


TRANS-ATLANTIC TRAINING 2024 – CHANIA, GREECE
Earth Observation and Machine Learning for Disaster Mapping

GEP Demo | Public Processing Jobs

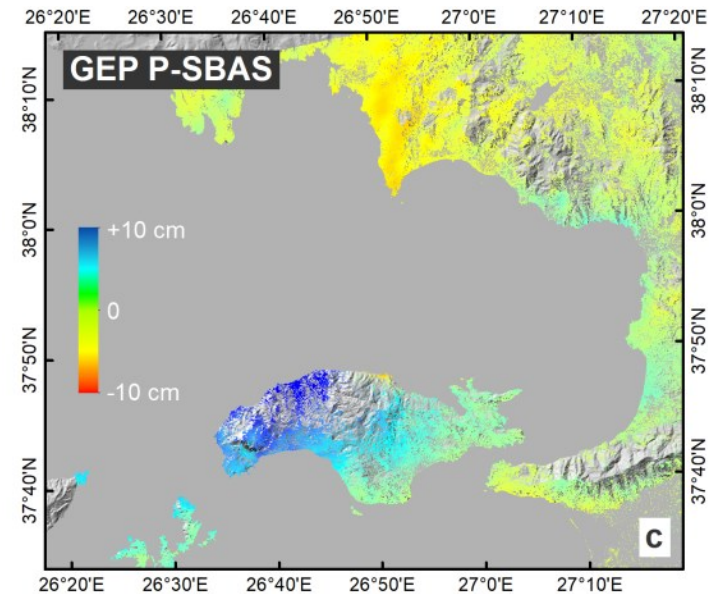
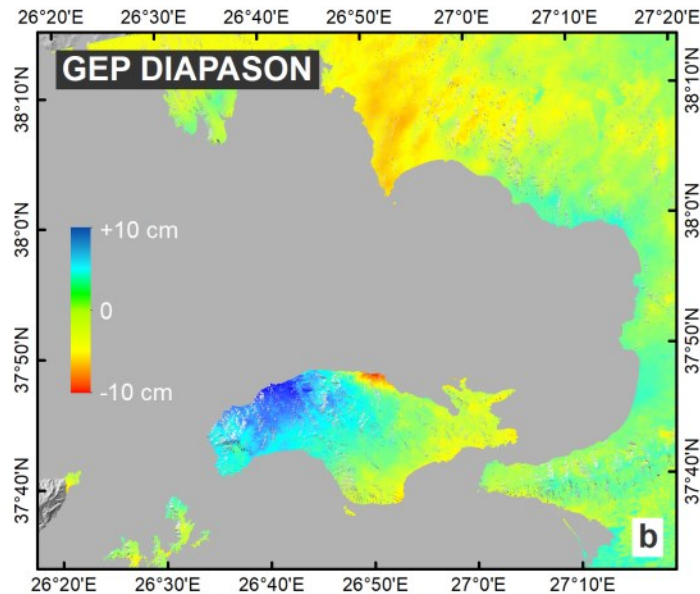
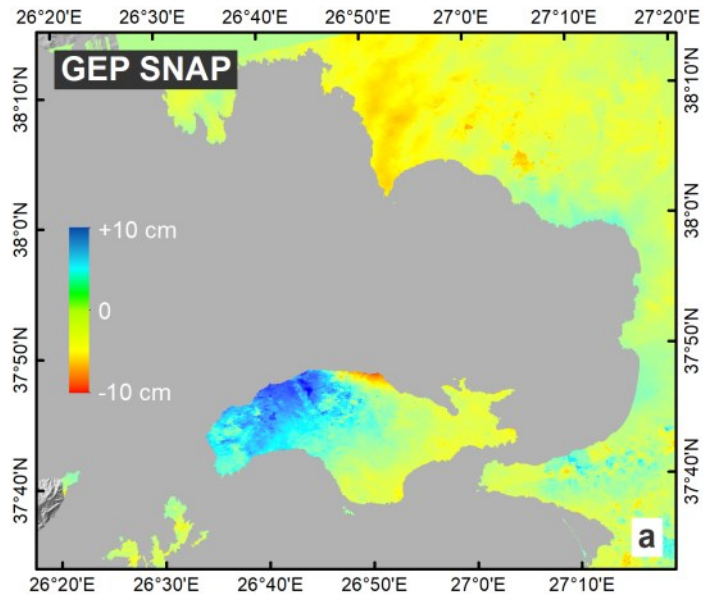
Michael Foumelis | Assoc. Professor AUTH

TAT 2024 Training
14-17 July 2024



GEP Service Jobs | Samos 2020 Earthquake

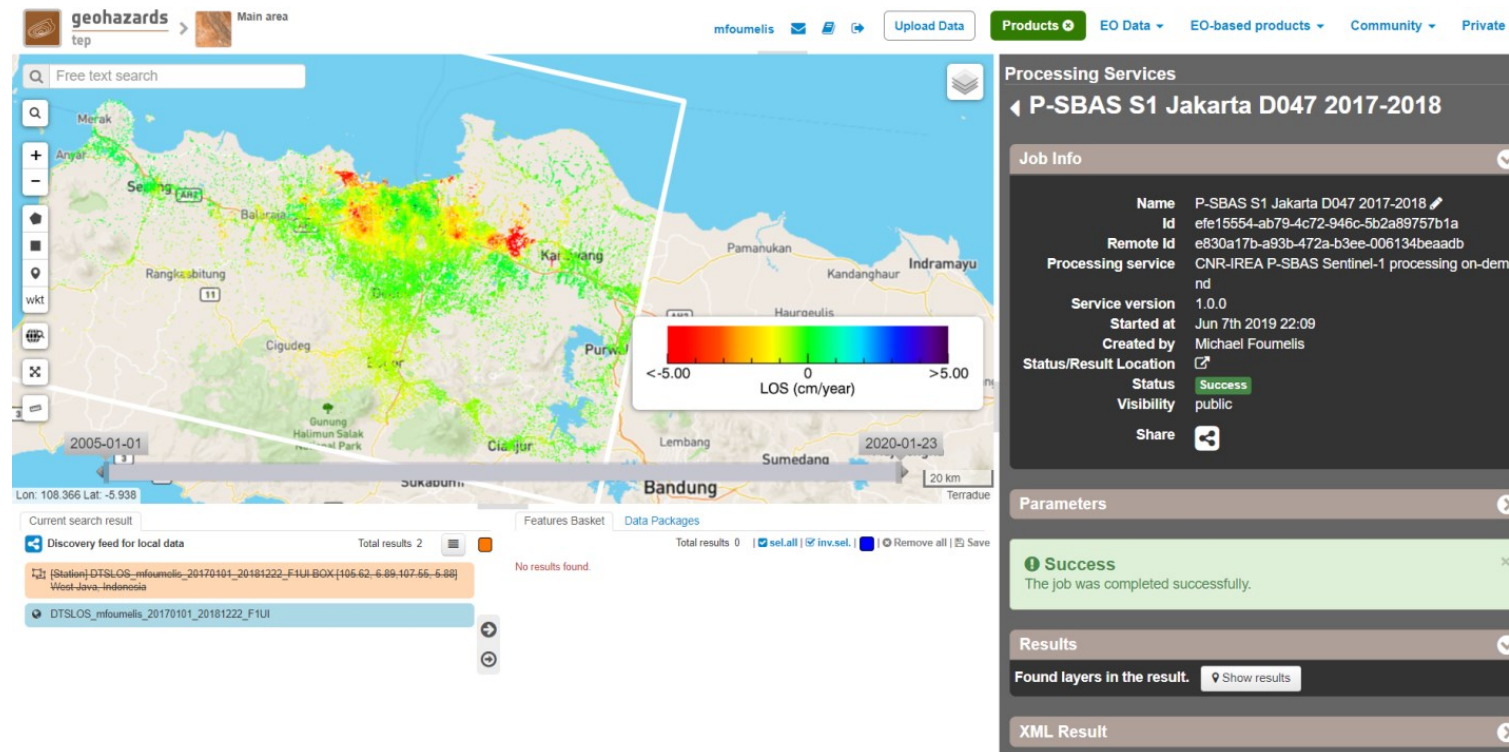
- SNAP DInSAR | [SNAP LINK](#)
- DIAPASON DInSAR | [DIAPASON LINK](#)
- P-SBAS IFG | [P-SBAS IFG LINK](#)



GEP Service Jobs | Land Subsidence in Jakarta (Indonesia)

—P-SBAS Sentinel-1 | [P-SBAS LINK](#)

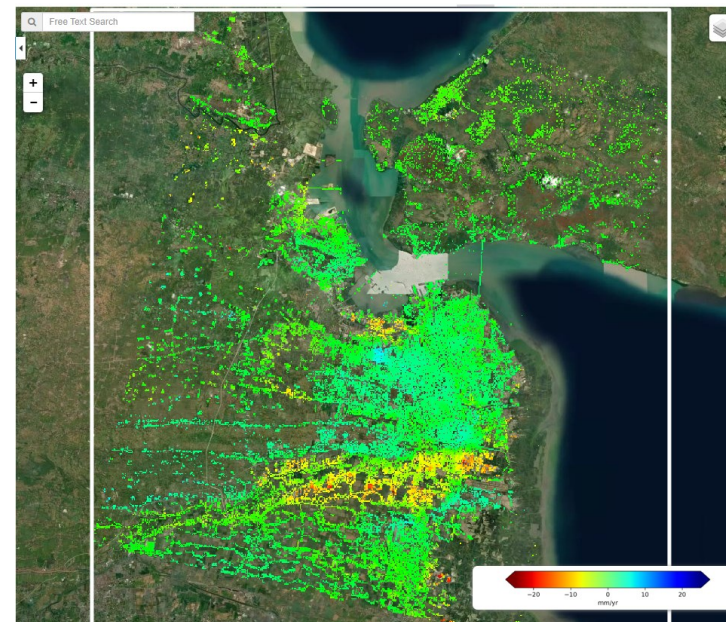
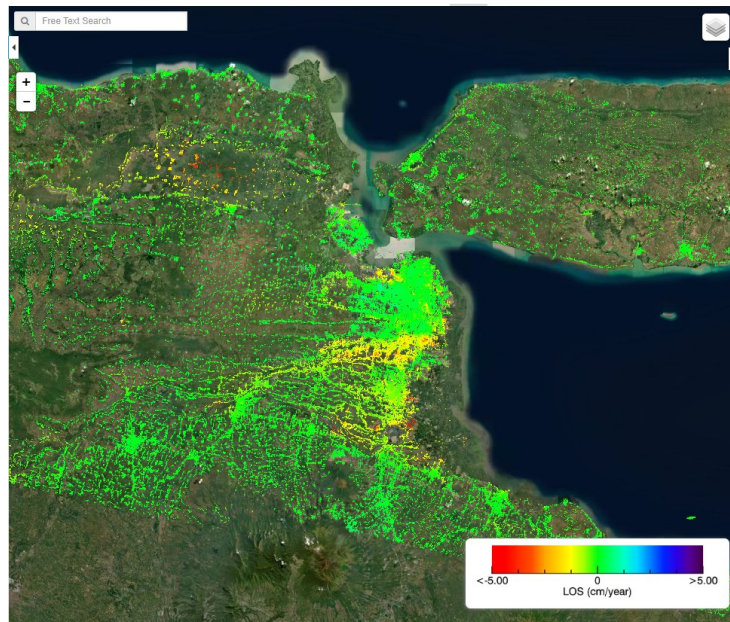
Search by Location: **Jakarta**



GEP Service Jobs | Land Subsidence in Surabaya (Indonesia)

- P-SBAS Sentinel-1 | [P-SBAS LINK](#)
- SNAPPING PSI Med Sentinel-1 | [SNAPPING LINK](#)

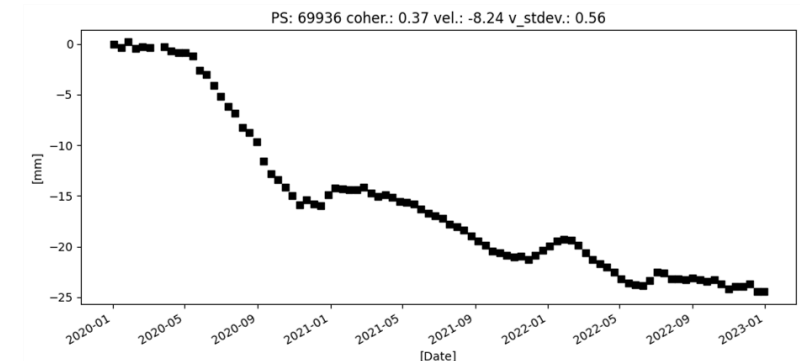
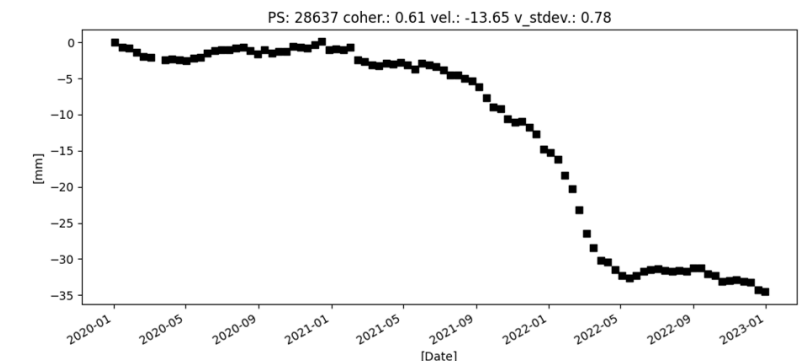
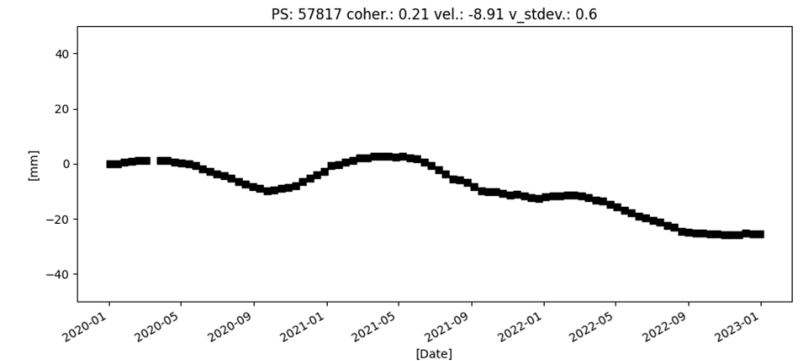
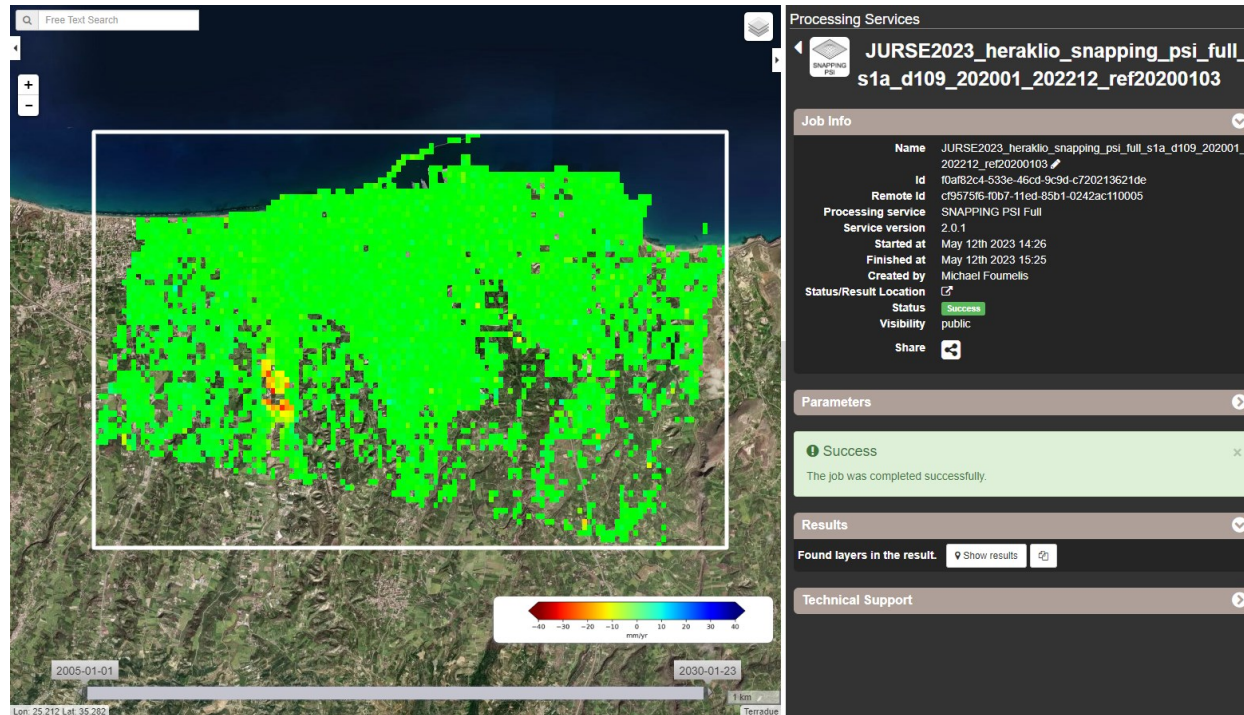
Search by Location: **Surabaya**



GEP Service Jobs | Land Subsidence in Heraklion (Greece)

– SNAPPING PSI Full Sentinel-1 | [SNAPPING LINK](#)

Search by Location: **Heraklio**





TRANS-ATLANTIC TRAINING 2024 – CHANIA, GREECE

Earth Observation and Machine Learning for Disaster Mapping

Thank you

Michael Foumelis
mfoumelis@geo.auth.gr



EO.Lab
Earth Observation
& Geospatial Applications Lab



CIRI-AUTH
CENTER FOR INTERDISCIPLINARY RESEARCH AND INNOVATION
Aristotle University of Thessaloniki