

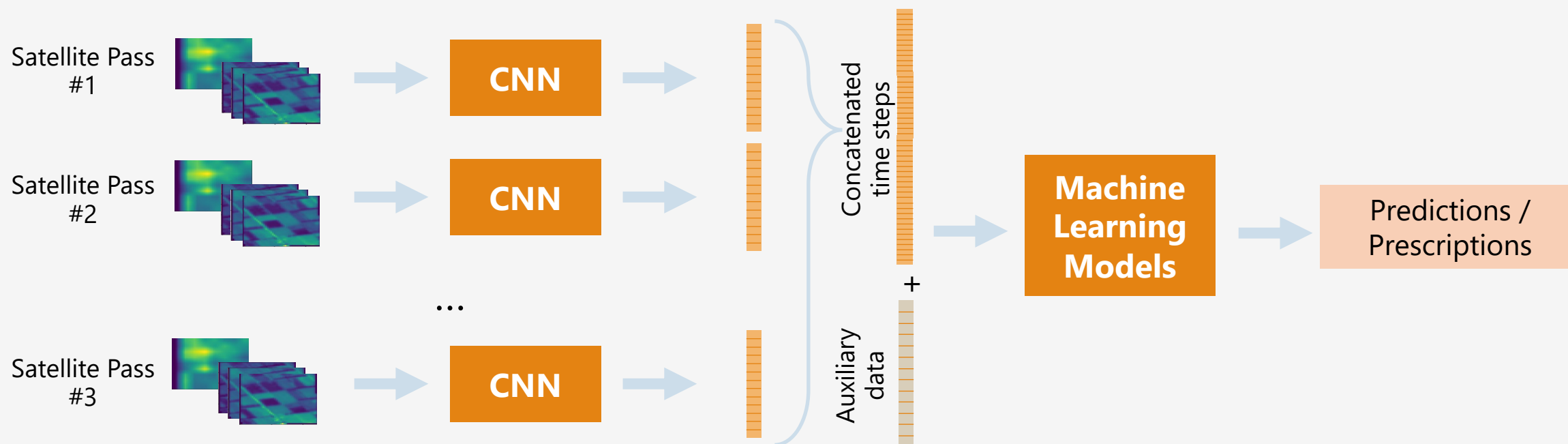
Project Report

Objective of the project

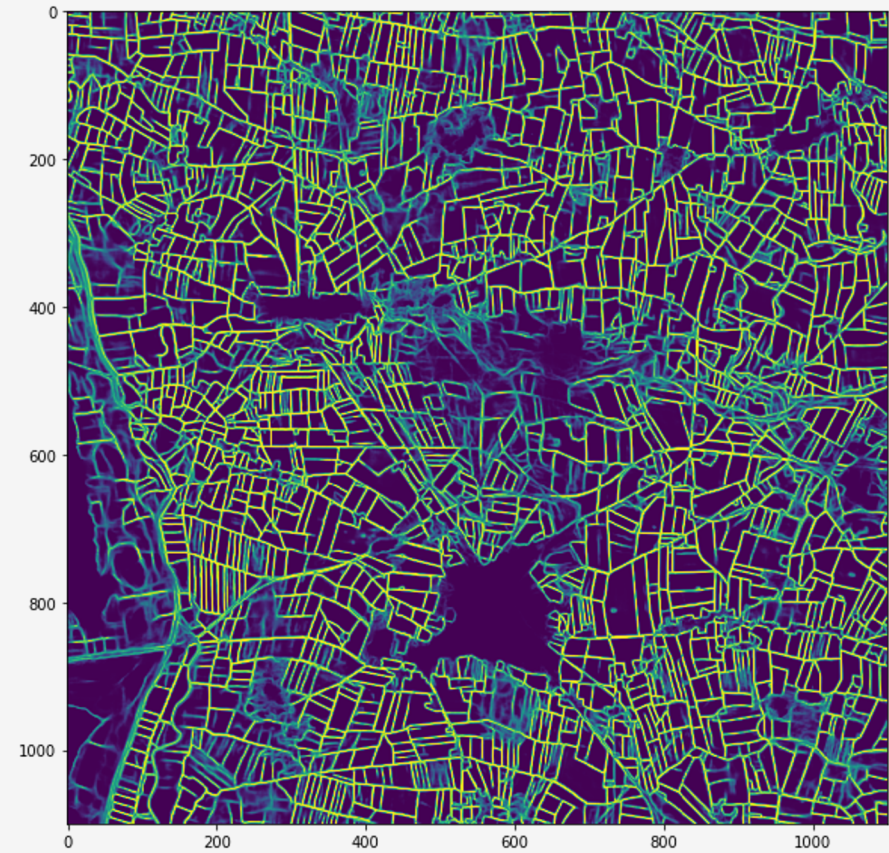
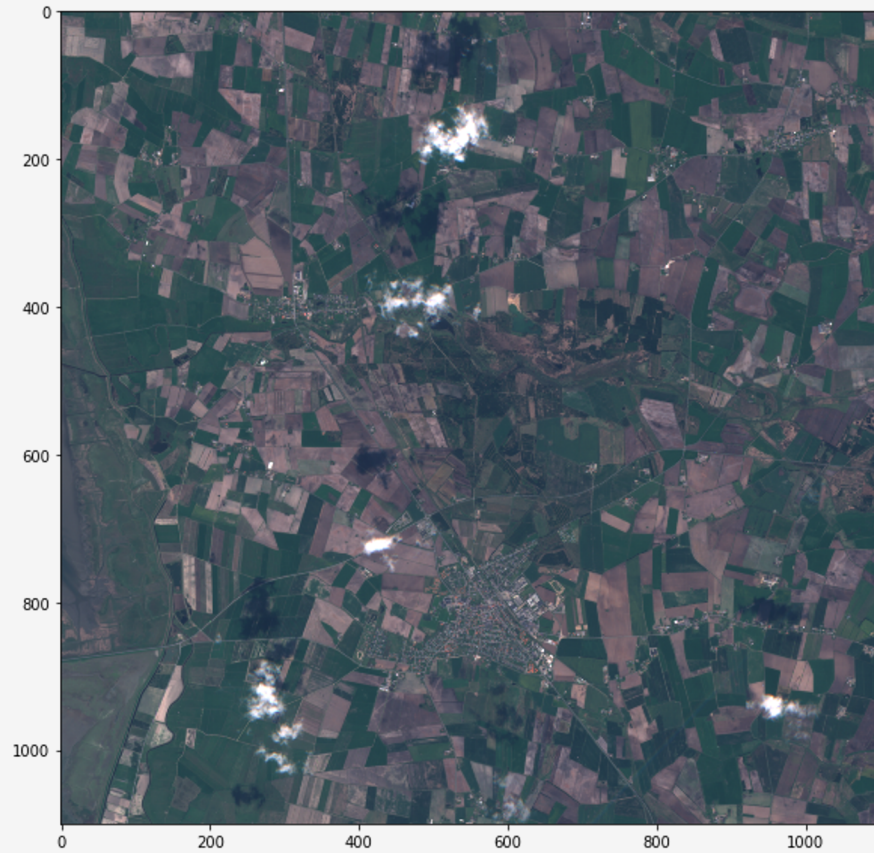
- Use remote sensing data to identify and delineate parcels
- Use remote sensing data to detect crop types
- Support the local agriculture development by using the advanced technology

Using Satellite Images for Prediction and Prescription

New satellite images every 5-7 days

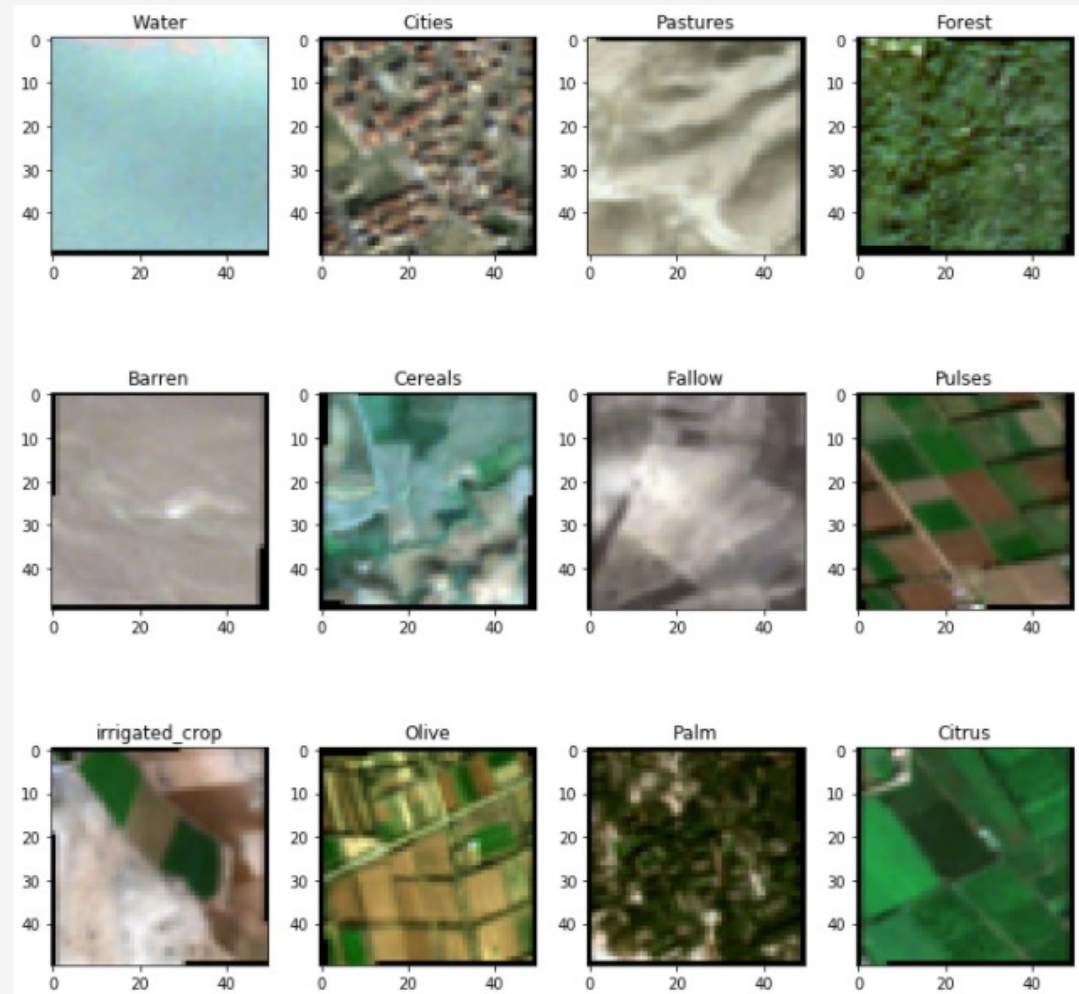


Field Delineation



Land Cover: Crop Detection

- 12,000 land cover labels, from 2020 and 2021
- Up to 16 labels
- Out of sample results 89.2%



Highlighted benefits

- The accurate field delineation and crop detection results supported the local users in better understanding of their agriculture landscape and better planning for increased yield.
- The local users are motivated to contribute more data and improve the models in the future.