

The Results of the first phase of sponsorship from EarthConsole

Jiaming Chen

University of Bonn

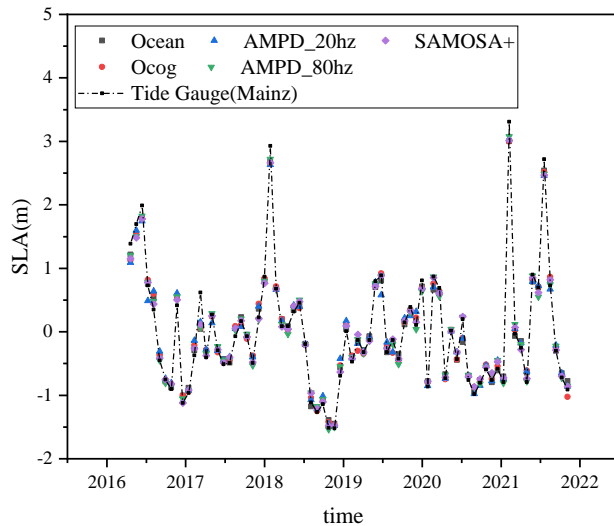
chenjiaming@uni-bonn.de

2022/4/22

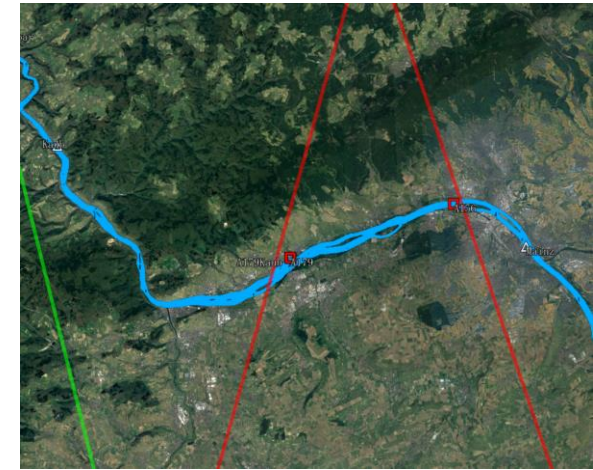
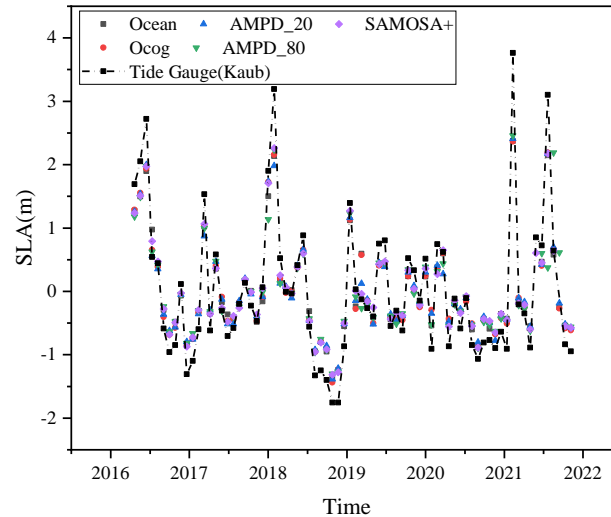
Some Results

(1) Compare the water level time series between AMPD-PF, Ocean, Ocog and SAMOSA+ over A156, A179, and A179Kaub in Rhein River

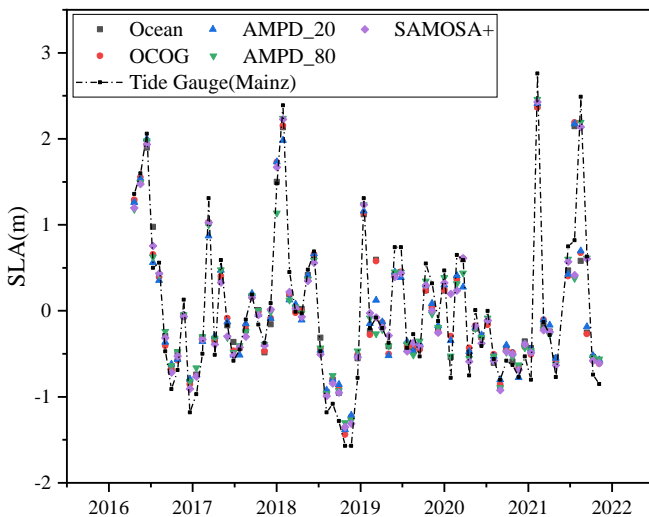
A156 Water level Time Series



A179Kaub Water Level Time Series



A179 Water Level Time Series

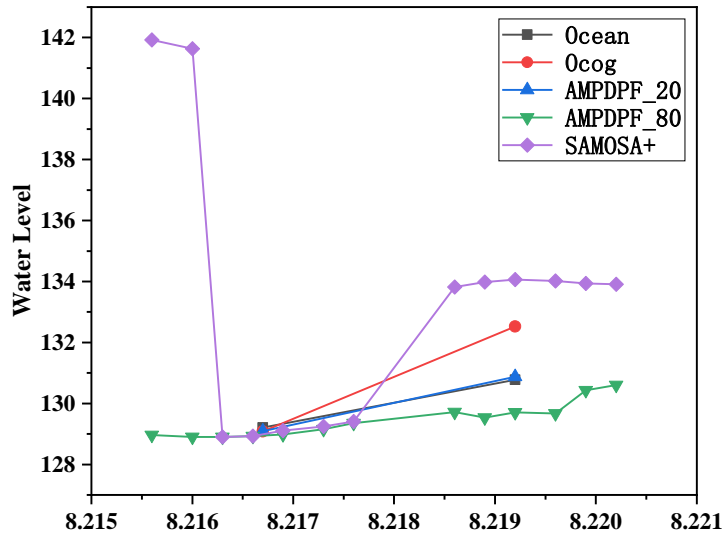


	SAMOSA+ (80hz)	Ocean	Ocog	AMPD-PF (20hz)	AMPD-PF (80hz)
A156	109 mm (76)	125 mm (76)	134 mm (76)	146 mm (76)	112 mm (76)
A179	220 mm (75)	221 mm (75)	213 mm (75)	215 mm (75)	206 mm (75)
A179Kaub b	319 mm (73)	385 mm (75)	375 mm (74)	381 mm (75)	375mm (75)

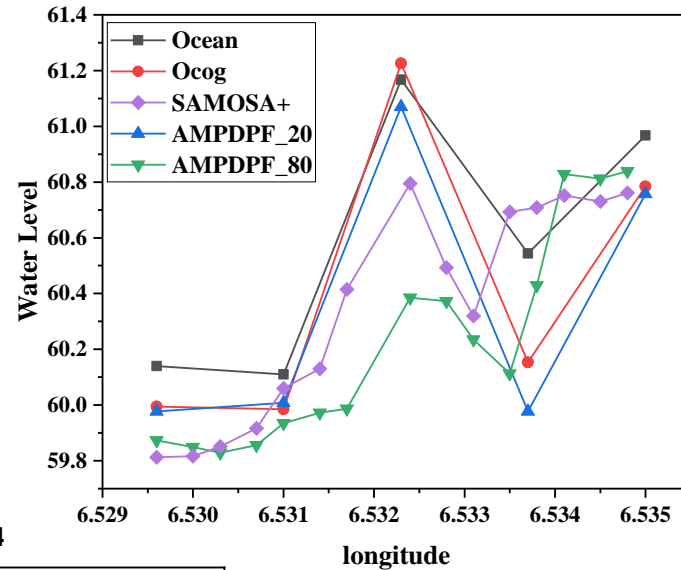
Some Results

(2) Comparison of Retracking Methods over a certain cycle in some virtual stations

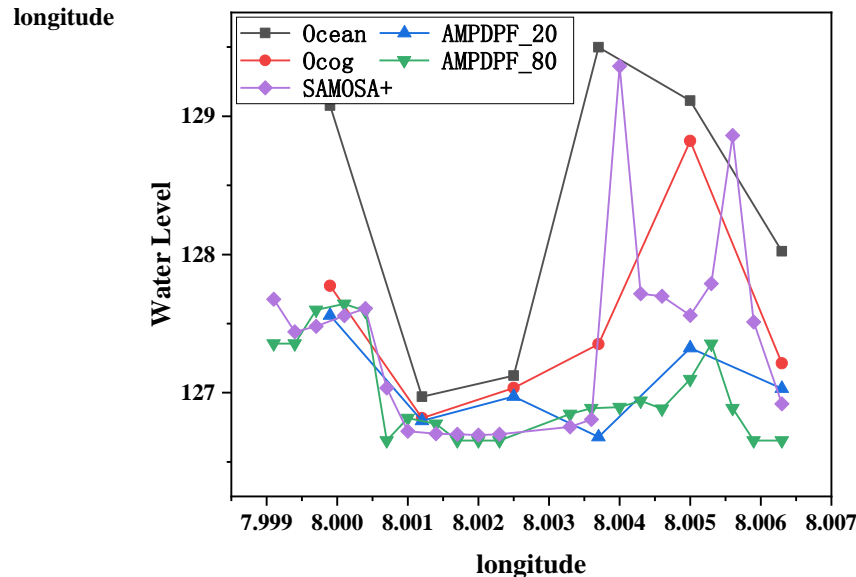
A156 Cycle15



A100Wesel Cycle6



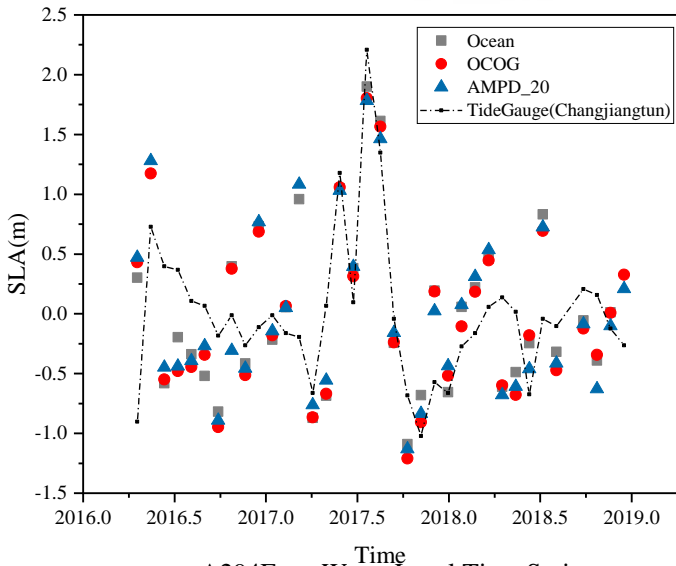
A179 Cycle54



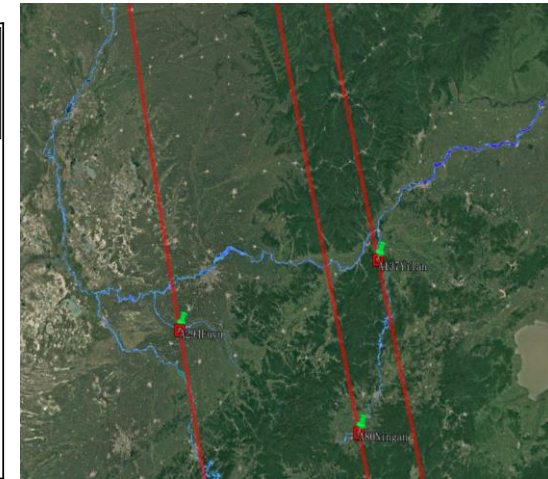
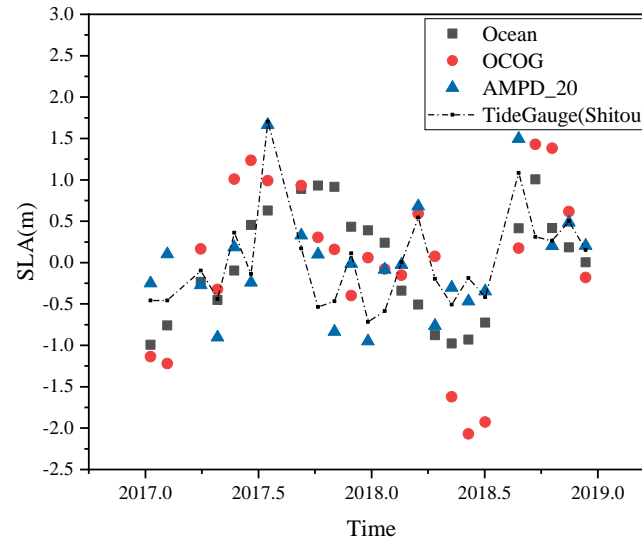
Some Results

(3) Compare the water level time series between AMPD-PF, Ocean, Ococ in Amur River

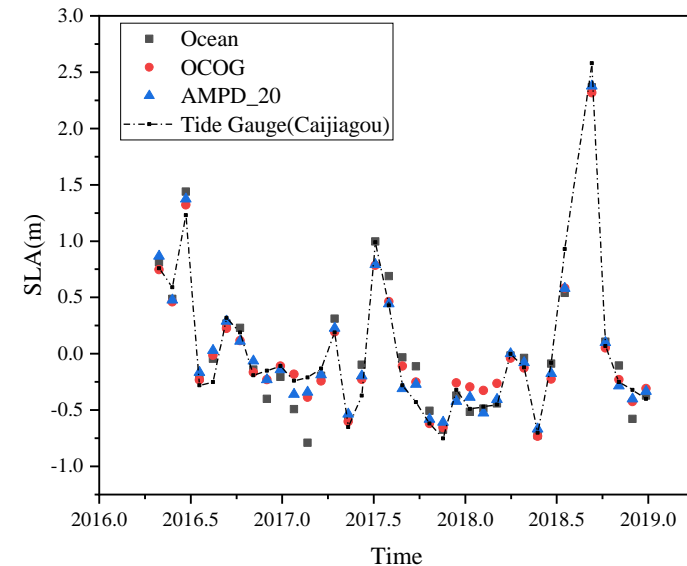
A137Yilan Water Level Time Series



A80Ningan Water Level Time Series



A294Fuyu Water Level Time Series



Station	Ocean	Ococ	AMPD-PF (20hz)	SAMOSA+ (Jiang, 2020)	Ococ (Jiang,2020)	PPCog (Jiang,2020)
A294 Fuyu	0.187 m (36)	0.134 m (36)	0.125 m (36)	1.19 m	1.15 m	1.87 m
A137 Yilan	0.561 m (34)	0.550 m (35)	0.568 m (36)	1.62 m	2.19 m	1.54 m
A80 Ningan	0.732 m (24)	0.868 m (24)	0.314 m (23)	1.21 m	1.37 m	0.65 m

Thank you!

