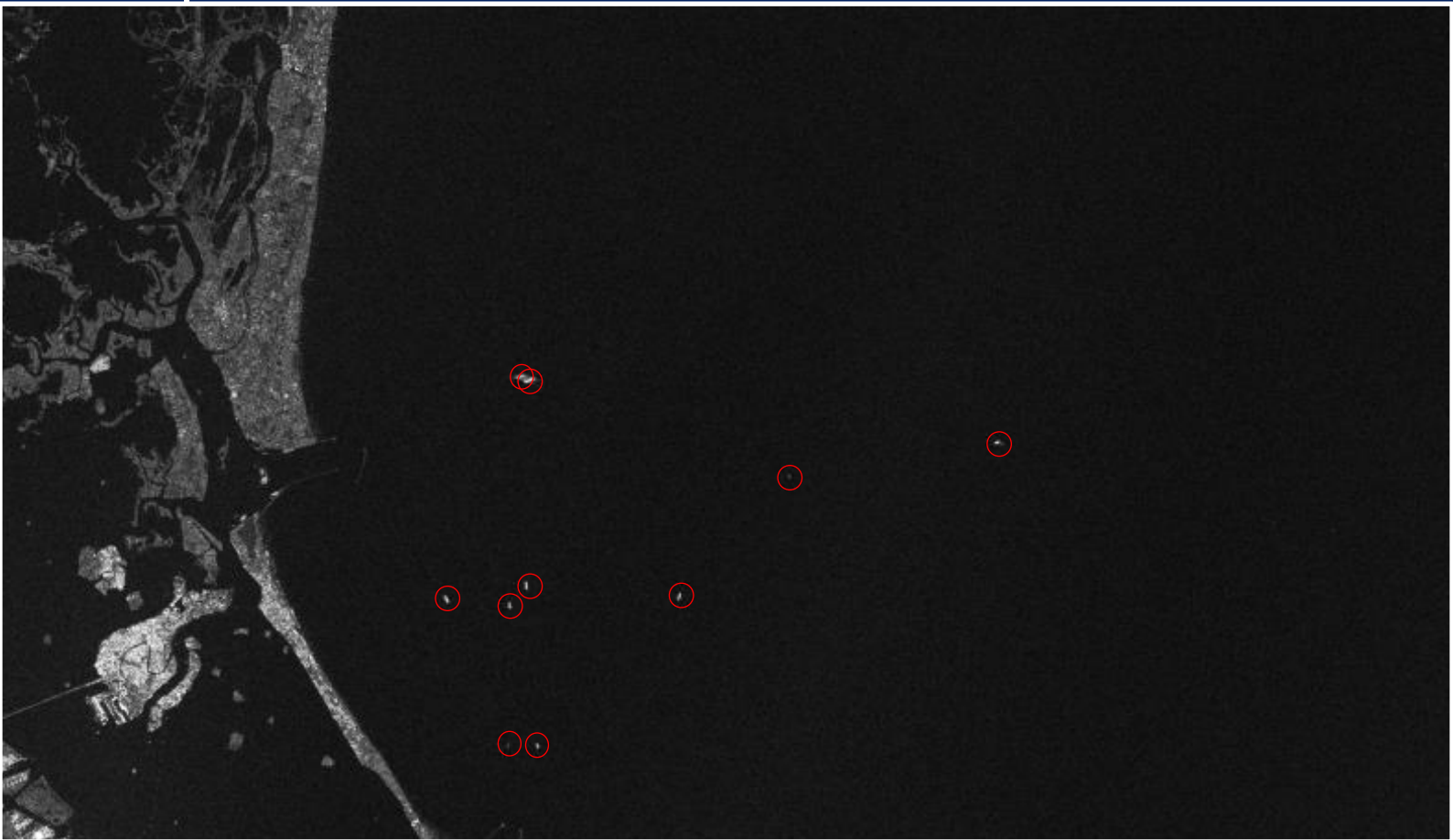


RUS

Copernicus



TRAINING KIT - OCEA01

SHIP DETECTION WITH SENTINEL-1 USING SNAP S-1
TOOLBOX - GULF OF TRIESTE, ITALY



Research and User Support for Sentinel Core Products

The RUS Service is funded by the European Commission, managed by the European Space Agency and operated by CSSI and its partners.

Authors would be glad to receive your feedback or suggestions and to know how this material was used. Please, contact us on training@rus-copernicus.eu

Cover images produced by RUS Copernicus

The following training material has been prepared by Serco Italia S.p.A. within the RUS Copernicus project.

Date of publication: October 2018 (Revision – February 2019)

Version: 1.3

Suggested citation:

Serco Italia SPA (2018). *Ship detection with Sentinel-1 – Gulf of Trieste (version 1.3)*. Retrieved from RUS Lectures at <https://rus-copernicus.eu/portal/the-rus-library/learn-by-yourself/>



This work is licensed under a [Creative Commons Attribution-NonCommercial-ShareAlike 4.0 International License](https://creativecommons.org/licenses/by-nc-sa/4.0/).

DISCLAIMER

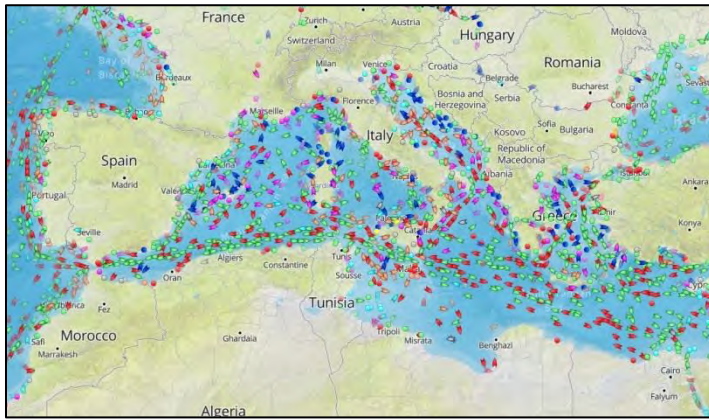
While every effort has been made to ensure the accuracy of the information contained in this publication, RUS Copernicus does not warrant its accuracy or will, regardless of its or their negligence, assume liability for any foreseeable or unforeseeable use made of this publication. Consequently, such use is at the recipient's own risk on the basis that any use by the recipient constitutes agreement to the terms of this disclaimer. The information contained in this publication does not purport to constitute professional advice.

Table of Contents

1	Introduction.....	3
2	Training.....	3
2.1	Data used.....	3
2.2	Software in RUS environment.....	3
3	Register to RUS Copernicus.....	4
4	Request a RUS Copernicus Virtual Machine.....	5
5	Step by step.....	8
5.1	Data download – ESA SciHUB.....	8
5.2	SNAP – open and explore data.....	11
5.3	Subset.....	12
5.4	Apply orbit file.....	13
5.5	Add vector mask.....	13
5.6	Run ship detection.....	14
5.6.1	Land-Sea-Mask.....	15
5.6.2	Calibration.....	15
5.6.3	Adaptive Thresholding.....	16
5.6.4	Object Discrimination.....	17
5.7	Export the results to Shapefile.....	19
5.7.1	OPTION 1 – No error.....	19
5.7.2	OPTION 2 – SNAP versions with error.....	19
5.8	Visualization in QGIS.....	22
6	Other suggested steps.....	24
6.1	Downloading the outputs from VM and visualization in Google Earth.....	24
7	Further reading and resources.....	26

1 Introduction

The Research and User Support for Sentinel core products (RUS) service provides a free and open scalable platform in a powerful computing environment, hosting a suite of open source toolboxes pre-installed on virtual machines, to handle and process data acquired by the Copernicus Sentinel satellites constellation.



AIS real time marine traffic – 27 Jun. 2017 3:27 PM

In this tutorial we will employ RUS for ship detection (marine surveillance) in the Gulf of Trieste using Sentinel-1 Satellite-borne synthetic aperture radar (SAR). Marine surveillance can be done using different methodologies. A first option consists of cooperative systems in which ships themselves report their identities and positions. The three most common options are Automatic Identification System (AIS), Long Range Identification and Tracking

(LRIT) and Vessel Monitoring System (VMS). While the first one is in fact available continuously and globally, the two others are not. Another option is the non-cooperative systems which do not require cooperation on the side of the vessel. These systems most commonly use cameras and radars located on a variety of platforms (ships, airplanes, satellites, etc.).

Ship detection with Sentinel-1 falls into the non-cooperative category and enables detection of vessels not carrying AIS or other tracking system on board such as smaller fishing ships or ships that are in the surveyed area illegally (illegal fishing, piracy etc.). Moreover, SAR is not reliant on solar illumination and is rather independent of weather conditions, therefore enabling frequent monitoring.

2 Training

Approximate duration of this training session is one hour.

The Training Code for this tutorial is **OCEA01**. If you wish to practice the exercise described below within the RUS Virtual Environment, register on the [RUS portal](#) and open a User Service request from Your RUS service → Your dashboard.

2.1 Data used

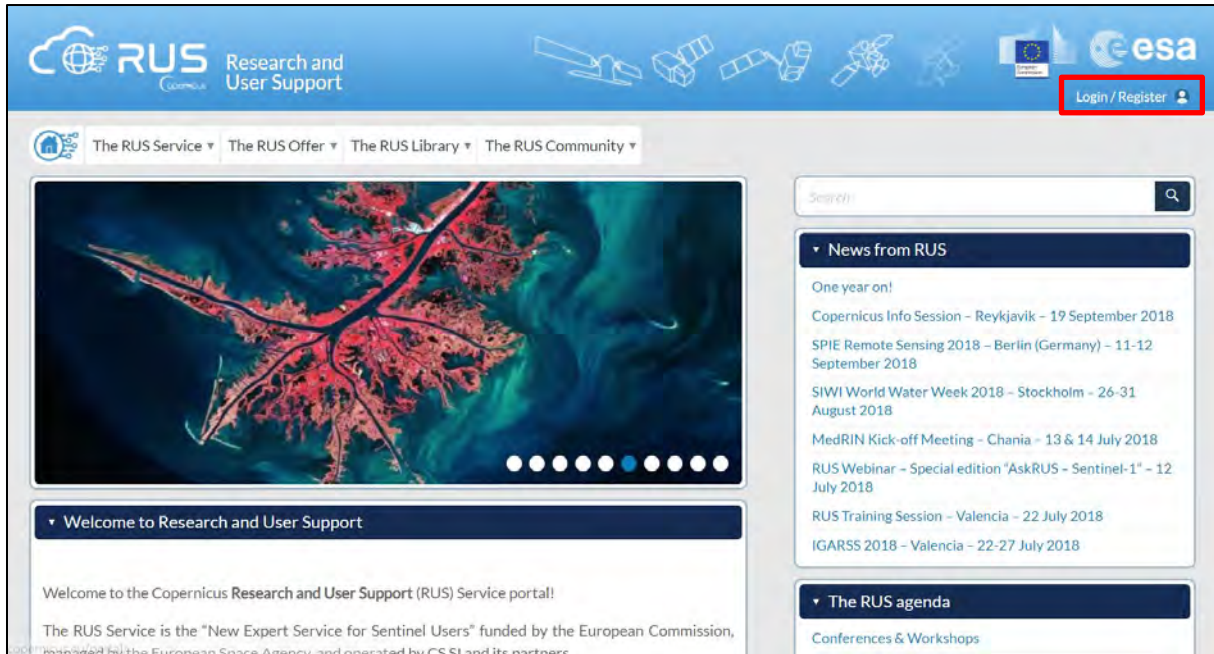
- One Sentinel-1A IW GRDH image with VH & VV polarization acquired on 9 October 2016 [downloadable @ <https://scihub.copernicus.eu/>]
S1A_IW_GRDH_1SDV_20161009T165807_20161009T165832_013416_0156B9_4550.zip
- Vector Sea mask as ESRI Shapefile stored in:
/shared/Training/OCEA01_ShipDetection_Trieste_TutorialKit/Auxdata

2.2 Software in RUS environment

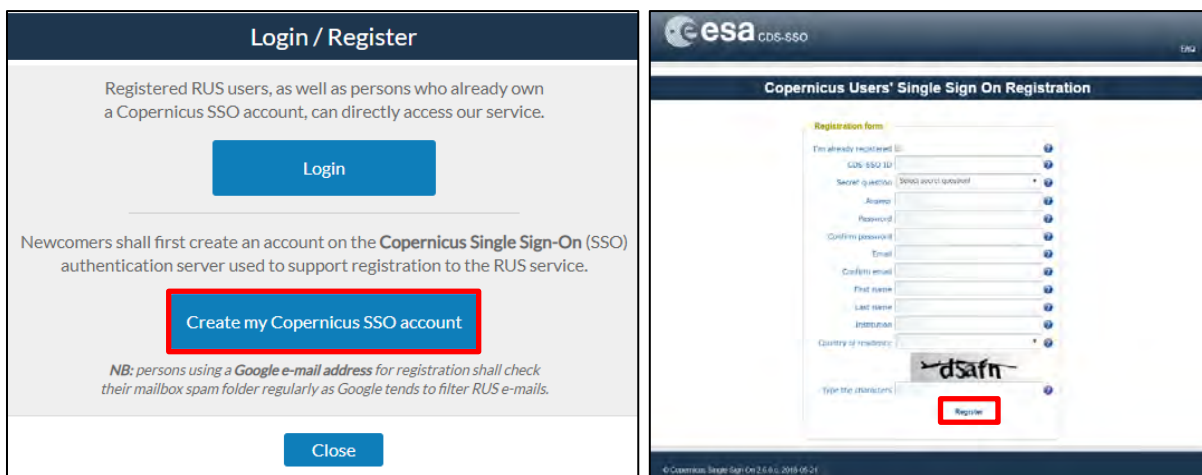
Internet browser, SNAP + Sentinel-1 Toolbox, QGIS (Extra steps: Google Earth Web)

3 Register to RUS Copernicus

To repeat the exercise using a RUS Copernicus Virtual Machine (VM), you will first have to register as a RUS user. For that, go to the RUS Copernicus website (www.rus-copernicus.eu) and click on **Login/Register** in the upper right corner.



Select the option **Create my Copernicus SSO account** and then fill in ALL the fields on the **Copernicus Users' Single Sign On Registration**. Click **Register**.



Within a few minutes you will receive an e-mail with activation link. Follow the instructions in the e-mail to activate your account.

You can now return to <https://rus-copernicus.eu/>, click on **Login/Register**, choose **Login** and enter your chosen credentials.

Login / Register

The registration system to access the RUS service platform has moved toward the COPERNICUS Single Sign On authentication server.

- New Users who have not yet registered to the RUS portal shall first create a COPERNICUS SSO account.

Note that your Copernicus SSO account will be activated only after the reception of the third email sent by the Copernicus service. We advise you to consult [this document](#) and [this page](#) to facilitate your registration procedure.

REGISTER COPERNICUS SSO account

Users who already have a COPERNICUS SSO account can login here:

Login

Close

Credentials

CDS-SSO ID

Password

Max Idle Time

Max Session Time

Login **Reset**

[Forgot your password?](#)

Upon your first login you will need to enter some details. You must fill all the fields.

Do you want to subscribe for a new RUS account?

Your ESA SSO subscription data:

Login

First Name

Last Name

Email

Organization

Country

Additional subscription information

Please complete the following information:

Where did you hear about the RUS service?
Select one or more items

outreach event
colleagues
newsletter
conference
social media
other

Institution type

Phone number

Title

Subscribe **Cancel**

4 Request a RUS Copernicus Virtual Machine

Once you are registered as a RUS user, you can request a RUS Virtual Machine to repeat this exercise or work on your own projects using Copernicus data. For that, log in and click on **Your RUS Service** → **Your Dashboard**.

RUS Research and User Support

Hello, Miguel

The RUS Service The RUS Offer The RUS Library The RUS Community **Your RUS service**

Your RUS service

This section gathers pages related to your RUS services:

- Your profile:** displays your personal information linked to your ESA SSO and RUS accounts.
- Your dashboard:** allows you to access your private dashboard.
- Your training:** allows you to register to a training session you have been invited to participate in.

News from RUS

One year on!

Copernicus Info Session - Reykjavik - 19 September 2018

SPIE Remote Sensing 2018 - Berlin (Germany) - 11-12 September 2018

SIWI World Water Week 2018 - Stockholm - 26-31 August 2018

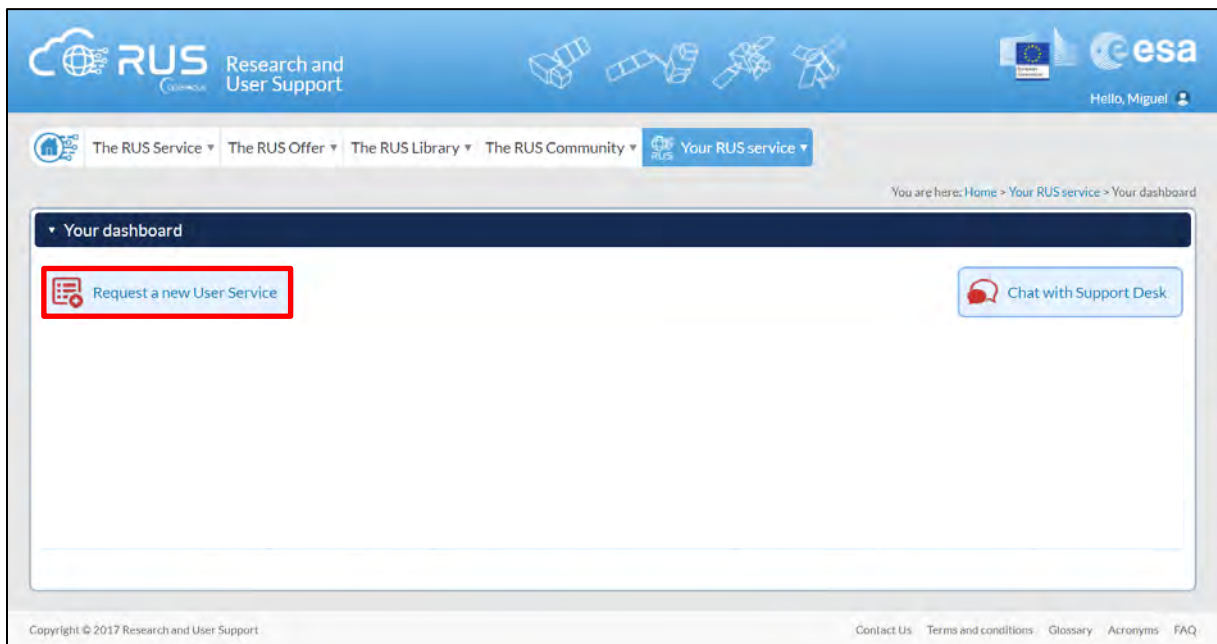
MedRIN Kick-off Meeting - Chania - 13 & 14 July 2018

RUS Webinar - Special edition "AskRUS - Sentinel-1" - 12 July 2018

RUS Training Session - Valencia - 22 July 2018

IGARSS 2018 - Valencia - 22-27 July 2018

Click on **Request a new User Service** to request your RUS Virtual Machine. Complete the form so that the appropriate cloud environment can be assigned according to your needs.



If you want to repeat this tutorial (or any previous one) select the one(s) of your interest in the appropriate field.

The image displays the 'User Support Request' form, specifically Step 1/3: 'Your experience'. The form prompts the user to provide background information. It includes questions about years of experience in Remote Sensing and whether the user has downloaded or handled Copernicus data. A key question is 'Do you wish to practice a tutorial exercise shown in a RUS webinar? If yes, please select your choice (hold down CTRL key for multiple selections)'. Below this question is a scrollable list of tutorial exercises: HAZA01 - Flood Mapping in Malawi, HAZA02 - Burned Area Mapping in Portugal, HYDR01 - Water Bodies Mapping over Northern Poland, LAND01 - Crop Mapping in Seville, LAND04 - Land Monitoring in Cyprus, and OCEA01 - Ship Detection in Gulf of Trieste. This list is highlighted with a red rectangular box. At the bottom of the form are 'Cancel' and 'Next' buttons.

Complete the remaining steps, check the terms and conditions of the RUS Service and submit your request once you are finished.

User Support Request

Summary information on your request:

This is a collection of information selected across the USR forms.

You can go back and edit this information if necessary.

General information on your request:

Years of experience in Remote Sensing

5-10 years

Downloaded Copernicus data?

✓

Handled/processed Copernicus data?

✓

Webinar codes

HAZA02, LAND04

About your RUS project:

Thematic area

Cryosphere (ice and snow)

Operations to perform on RUS

Algorithm development

Preference for downloading process

Self-downloading

Foreseen activities and support needs

Develop a land cover classification

Project name

RUS_Project1

Earth Observation Data information:

Type of Earth Observation Data:

Sentinel-1

✓

S1 - Product type

S1 - Product 1

S1 - Sensor mode

GRD

S1 - Polarisation

-

S1 - Orbit direction

-

Sentinel-2

X

Sentinel-3

X

Other

X

I don't know

X

Region of Interest:

Min Latitude

39.3303

Max Latitude

40.5877

Min Longitude

-4.6736

Max Longitude

-2.7205

Reference polygons

Data acquisition date(s):

None

Additional data specifications

☒
I have read and agree to the Terms and conditions of RUS Service.

Back and edit

Submit the request

Further to the acceptance of your request by the RUS Helpdesk, you will receive a notification email with all the details about your Virtual Machine. To access it, go to **Your RUS Service** → **Your Dashboard** and click on **Access my Virtual Machine**.

RUS

Research and User Support

Hello, Miguel

The RUS Service

The RUS Offer

The RUS Library

The RUS Community

Your RUS service

You are here: Home > Your RUS service > Your dashboard

Your dashboard

Request a new User Service

Chat with Support Desk

Project Name	ID	Date of submission	Status	Actions			Virtual Environment	
RUS_training1	231	2017-08-31	Open	Follow my project	Get support	Close my service	Access my Virtual Machine(s)	Access my CPU monitoring dashboard
				Cancel my request	Get a webinar kit	Rate my service ★★★★★	Freeze my Virtual Machine(s)	Report a technical incident

Copyright © 2017 Research and User Support

Contact Us

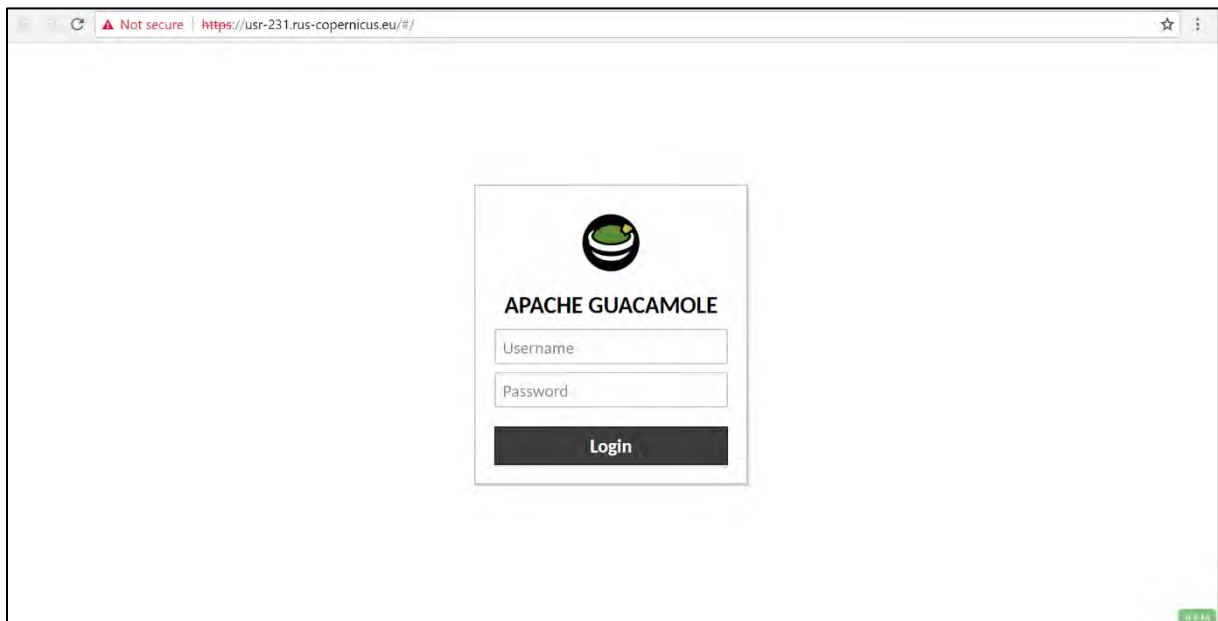
Terms and conditions

Glossary

Acronyms

FAQ

Fill in the login credentials that have been provided to you by the RUS Helpdesk via email to access your RUS Copernicus Virtual Machine.



This is the remote desktop of your Virtual Machine.

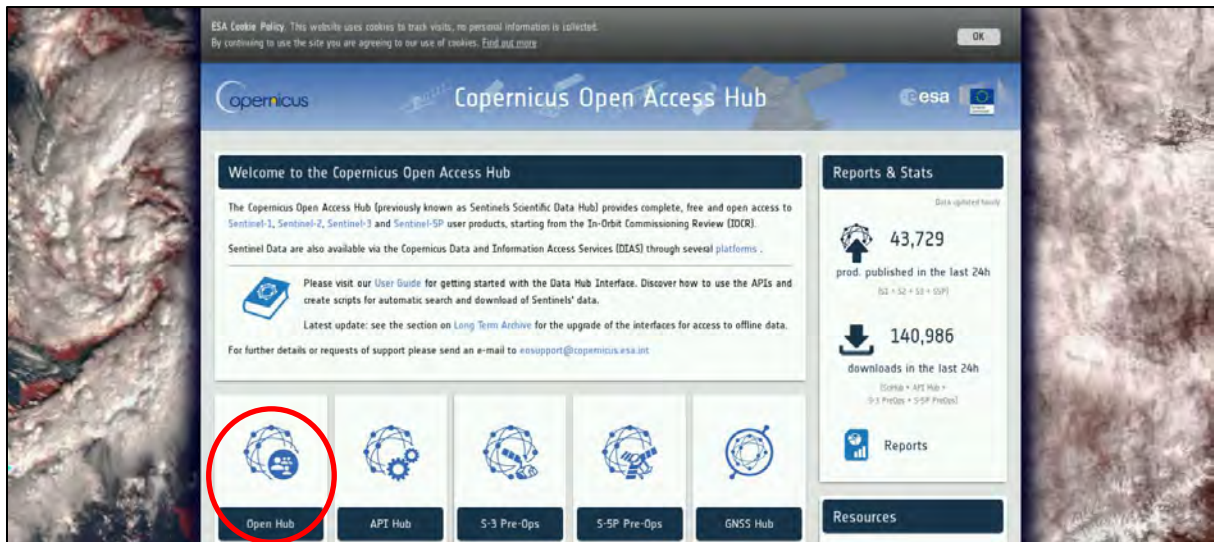


5 Step by step

5.1 Data download – ESA SciHUB

In this step we will download a Sentinel-1 scene from the Copernicus Open Access Hub using the online interface.

Go to <https://scihub.copernicus.eu/>



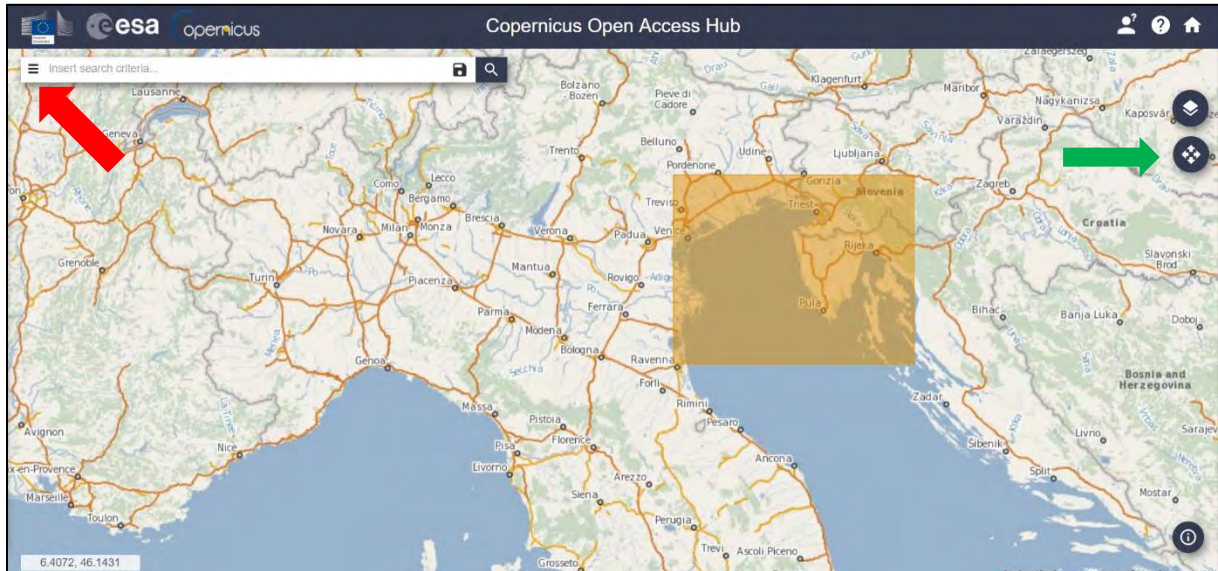
Go to “**Open HUB**”, if you do not have an account please register by going to “**Sign-up**” in the Login menu in the upper right corner and click register.



The screenshot shows the Copernicus Open Access Hub registration page. The header includes the Copernicus logo and the text 'Copernicus Open Access Hub'. The main content area is titled 'Register new account'. It contains a registration form with fields for 'Firstname', 'Lastname', 'Username', 'Password', 'Confirm Password', 'E-mail', and 'Confirm E-mail'. There are also dropdown menus for 'Select Domain', 'Select Usage', and 'Select your country'. A red arrow points to the 'REGISTER' button at the bottom right.

After you have filled in the registration form, you will receive an activation link by e-mail. Once your account is activated or if you already have an account, “**LOGIN**”.

Then click on the map and Navigate to the approximate location of Trieste. Switch to drawing mode (**green arrow**) and draw search rectangle approximately as indicated below.



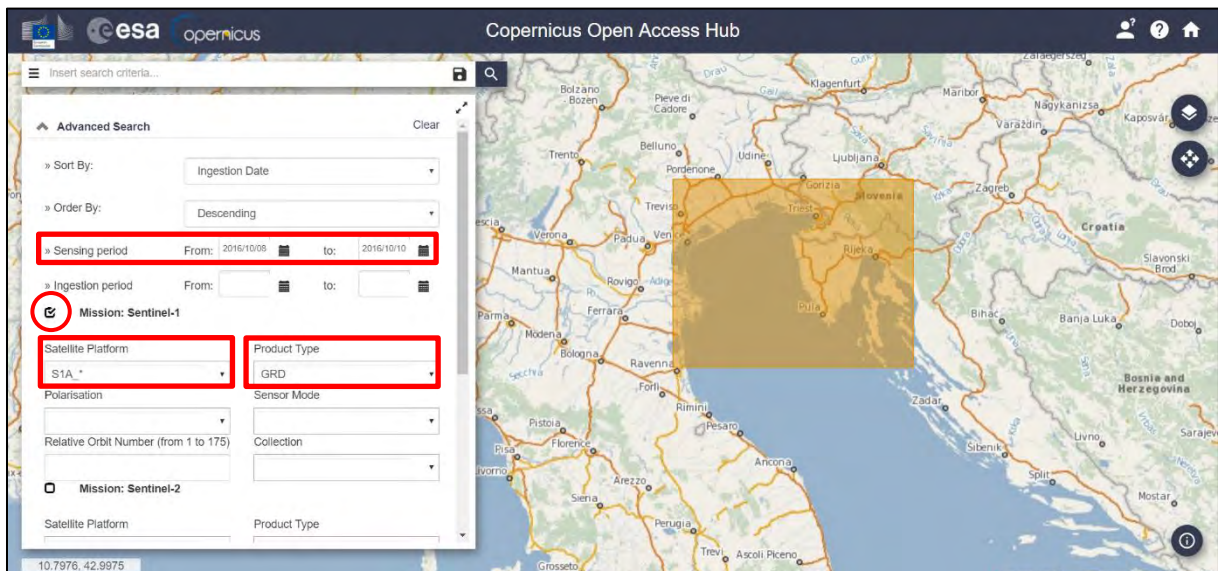
Open the search menu by clicking to the left part of the search bar (**red arrow**) and specify the following parameters:

Sensing period: From 2016/10/08 to 2016/10/10

Check Mission: Sentinel-1

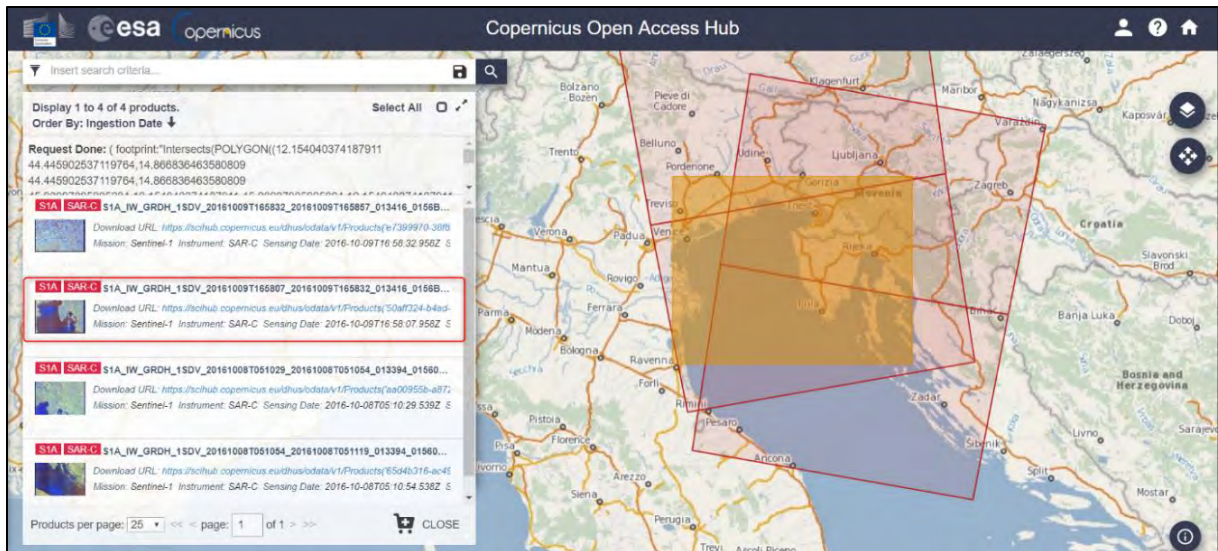
Satellite Platform: S1A*

Product Type: GRD (Ground-range-detected product)



In our case, the search returns approximately 4 results depending on the exact search area defined.

Download scene **S1A_IW_GRDH_1SDV_20161009T165807_20161009T165832_013416_0156B9_4550**.





Move downloaded scene from the *Downloads* folder (*/home/rus/Downloads*) to:
/shared/Training/OCEA01_ShipDetection_Trieste_TutorialKit/Original



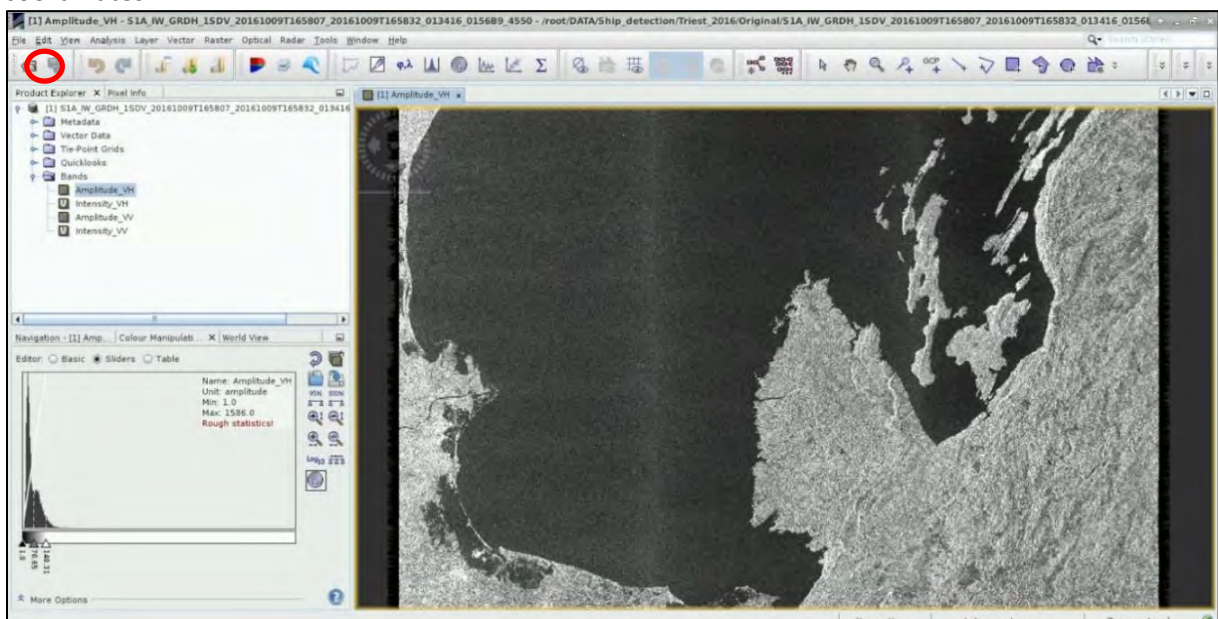
TIP 1: It may happen that the data used to create this exercise are temporarily unavailable or has been moved to the offline archive. In such case, you can use other image for the same location or request the data from the archive which may take some time.

5.2 SNAP – open and explore data

Open **SNAP Desktop** (icon located on the desktop); click **Open product** , navigate to:
/shared/Training/OCEA01_ShipDetection_Trieste_TutorialKit/Original
 and open ***S1A_IW_GRDH_1SDV_20161009T165807_20161009T165832_013416_0156B9_4550.zip***

The opened product will appear in **Product Explorer**. Click on the **+** or the  to expand the contents of the file, then expand **Bands** and double click ***Amplitude_VH*** to visualize the band.

We can see that the view appears “upside down”: this is because the scene was acquired during **ascending** pass (the satellite was moving in south to north direction looking to the east) and the view shows the pixels in order of data acquisition as the image is not yet projected into cartographic coordinates.

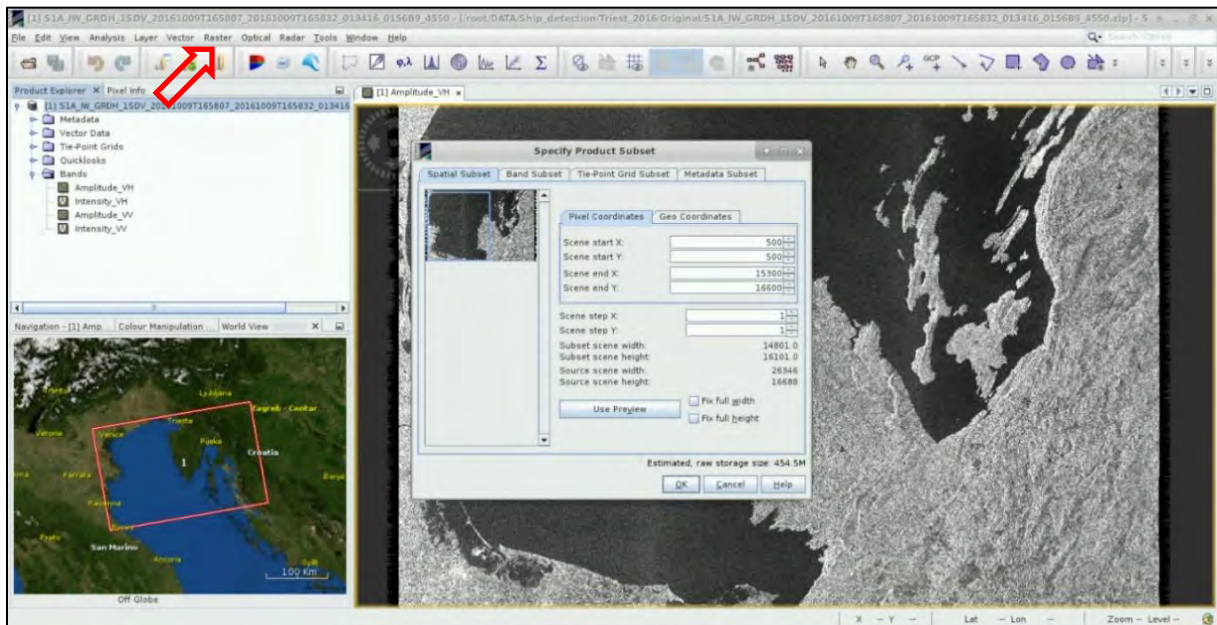


5.3 Subset

Since our Area of Interest (AOI) is quite small and there is no need to process the whole image, we start with sub-setting the scene to a more manageable size (See NOTE 1). This will reduce the processing time in further steps and is recommended when the analysis is focused only over a specific area and not the complete scene.

NOTE 1: The subset product appears in the **Product Explorer** but is not physically saved.

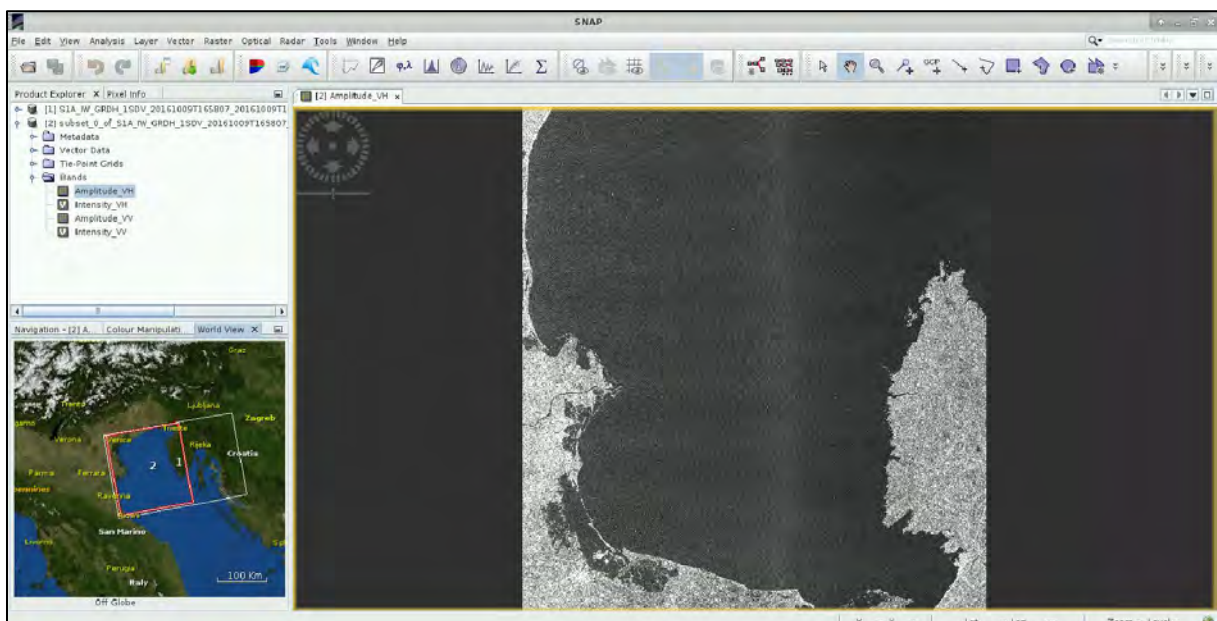
Click **Raster** → **Subset**.




In the Subset menu at the “**Spatial Subset**” tab, set the extent of the AOI in pixel coordinates to:


Scene start X: **500** Scene start Y: **500** Scene end X: **15300** Scene end Y: **16600**

Keep the default settings at the rest tabs and click **OK**. A new product has appeared in the **Product Explorer** Window. Expand the products structure go to “**Bands**” and double-click the **Amplitude_HV** to open it in View.

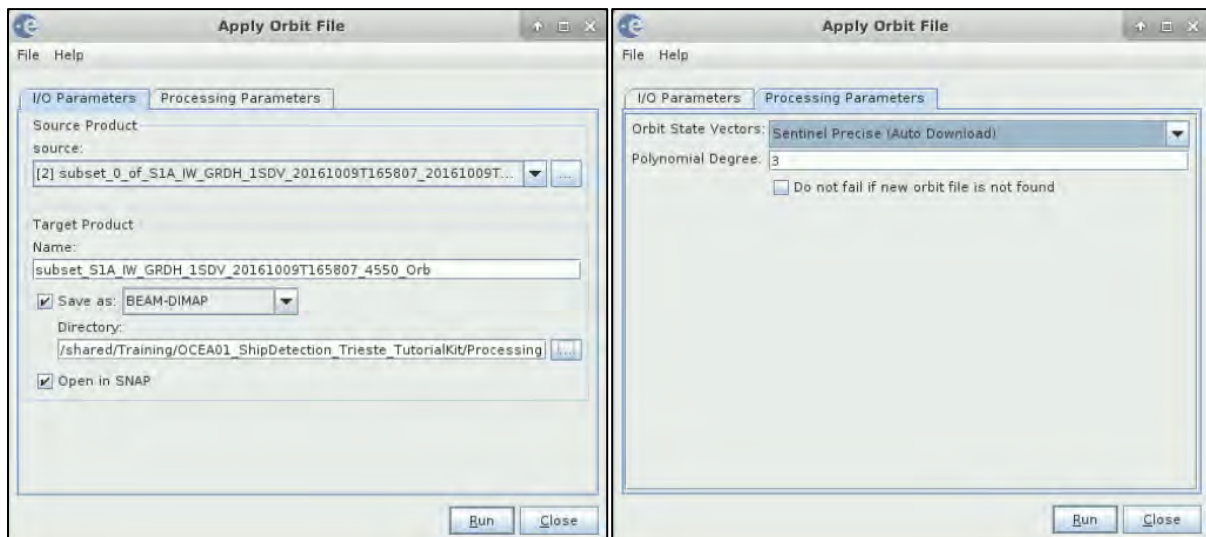


5.4 Apply orbit file

Next, we will apply precise orbit to the subset. (See  NOTE 2)

 NOTE 2: The orbit state vectors provided in the metadata of a SAR product are generally not accurate and can be refined with the precise orbit files which are available days-to-weeks after the generation of the product. The orbit file provides accurate satellite position and velocity information. Based on this information, the orbit state vectors in the abstract metadata of the product are updated. (SNAP Help)

Click Radar → Apply Orbit file



We can shorten the output name a bit to:

subset_S1A_IW_GRDH_1SDV_20161009T165807_4550_Orb

and set output folder to:

/shared/Training/OCEA01_ShipDetection_Trieste_TutorialKit/Processing

Use this folder to save all the following processing products. All other settings remain set to default values.

Click **Run**. *Approximate processing time: 22sec*

5.5 Add vector mask

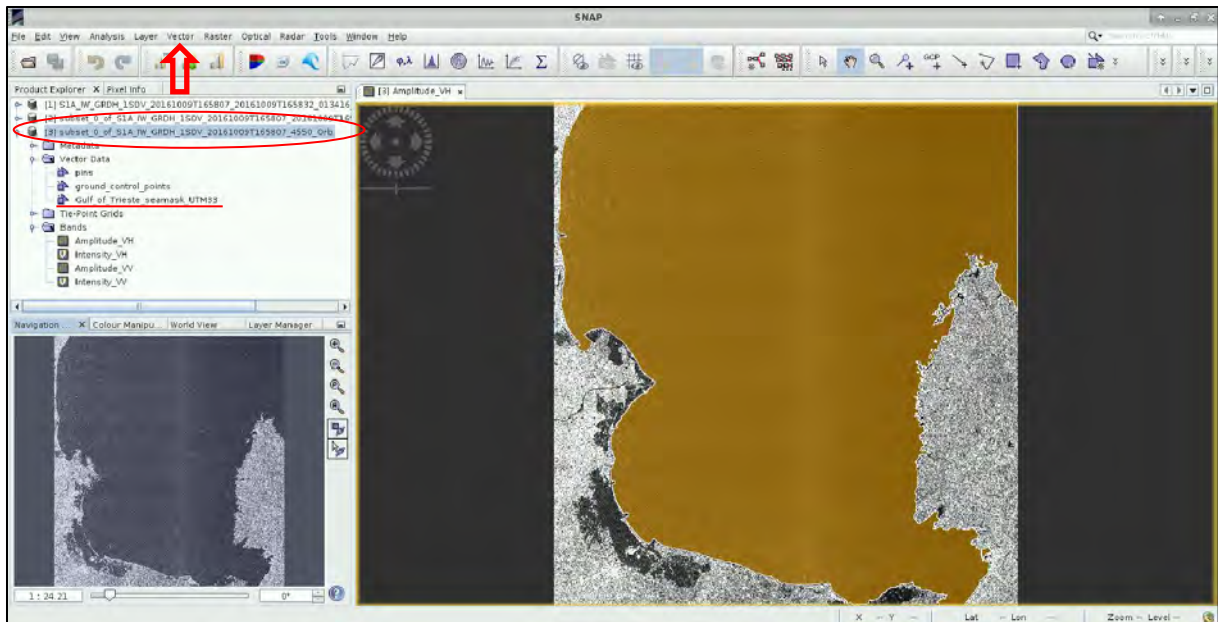
In order to avoid detection of false targets (ships) on land, the SNAP “Ocean Object detection” includes a land masking function. By default, the SRTM 3sec digital elevation model is used to identify and mask out areas with positive elevation. This method however can sometimes introduce false targets along complicated coastlines such as the Gulf of Trieste; therefore, here we choose to use our own vector mask. To do this we first need to import the mask into our product.

Open the **Amplitude_VH** band of the newly created product [3] and close all other views. Then select the **S1A_IW_GRDH_1SDV_20161009T165807_4550_Orb** by clicking once on it (whole product, not single band).

Click **Vector** → **Import** → **ESRI Shapefile**

Navigate to: **/shared/Training/OCEA01_ShipDetection_Trieste_TutorialKit/Auxdata**

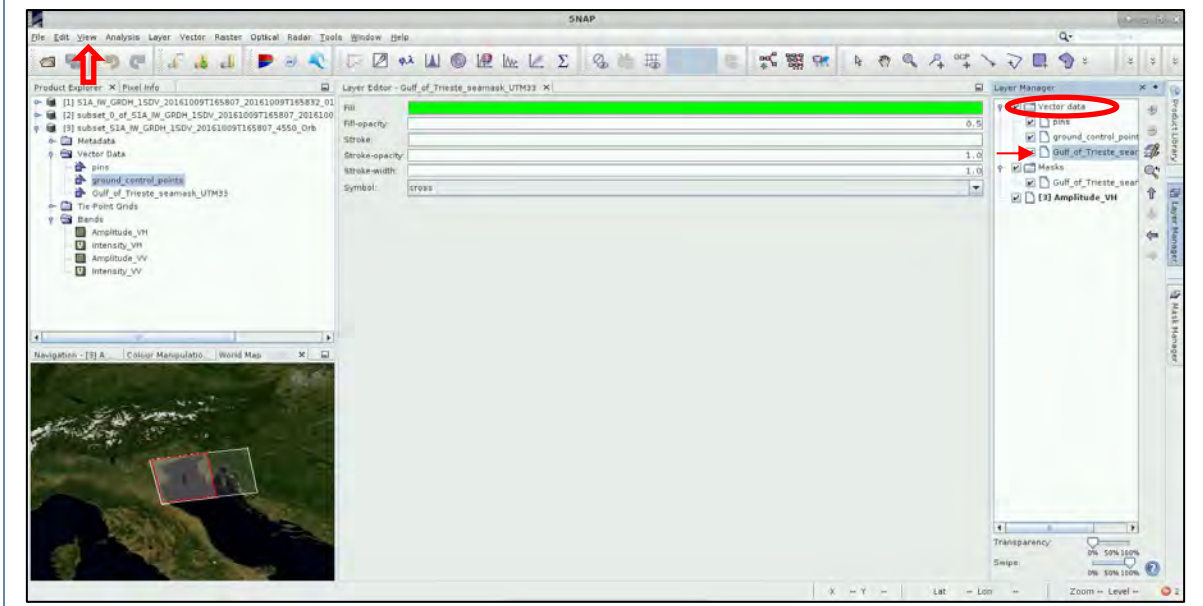
Open: **Gulf_Of_Trieste_seamask_UTM33.shp**



Now you can see a coloured overlay (that can differ every time you import it) on top of your open product and a new vector layer added into you Vector Data folder in the product. (See 💡 TIP 1)



TIP 1: Visualization of the vector overlay: To change the appearance of the added vector layer we can go to **View → Tool Windows → Layer Manager**. A new pane will open, and we can see all layers in our currently selected product. Expand the Vector data tab, select the “Gulf_Of_Trieste_seamask_UTM33” and click on Layer editor . In Layer editor you can change the colour, transparency, outline width etc.



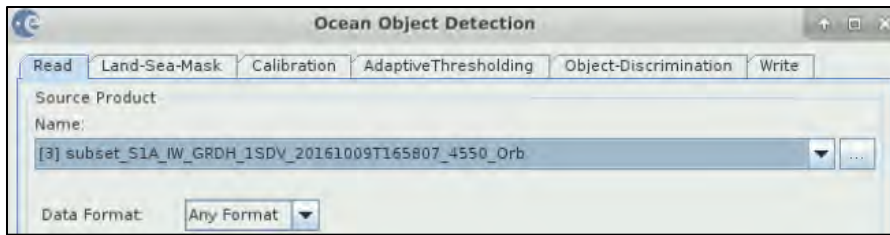
5.6 Run ship detection

Now we will run the ship detection algorithm. It consists of several steps: Land-Sea Mask, Calibration, Adaptive Thresholding and Object Discrimination. We will go through each step separately.

Click **Radar → SAR Applications → Ocean Applications → Ocean Object Detection**

In the processing window we see all steps as tabs.

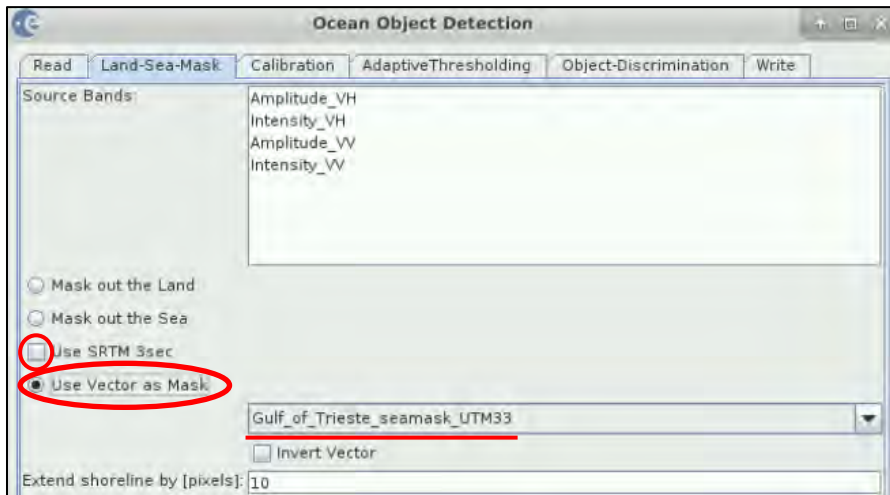
In the “Read” tab set the subset product with updated orbit information as an input. ([3]S1A_IW_GRDH_1SDV_20161009T165807_4550_Orb)




5.6.1 Land-Sea-Mask


The first step is masking the land areas to avoid false target detections on land. Here we will use loaded vector **mask Gulf_Of_Trieste_seamask_UTM33** and mask out areas that are not overlaid.

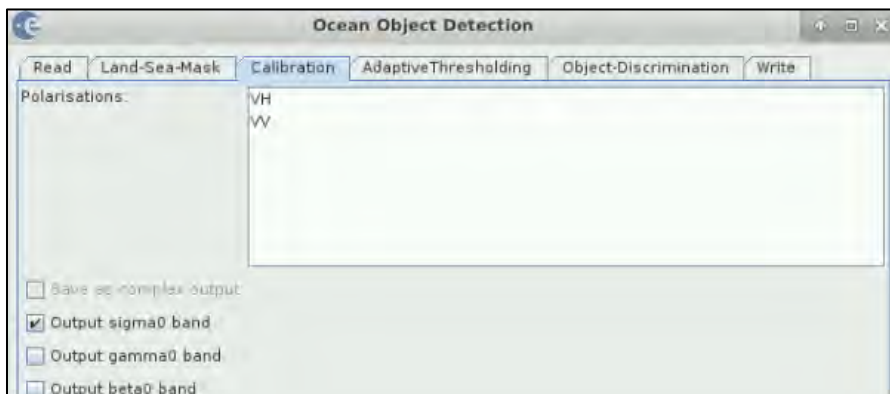
Unclick the “Use SRTM 3 sec” and select “Use Vector as Mask”. The loaded vector layer will appear in the text box. If no source band/s is/are selected, all bands will be used by default.



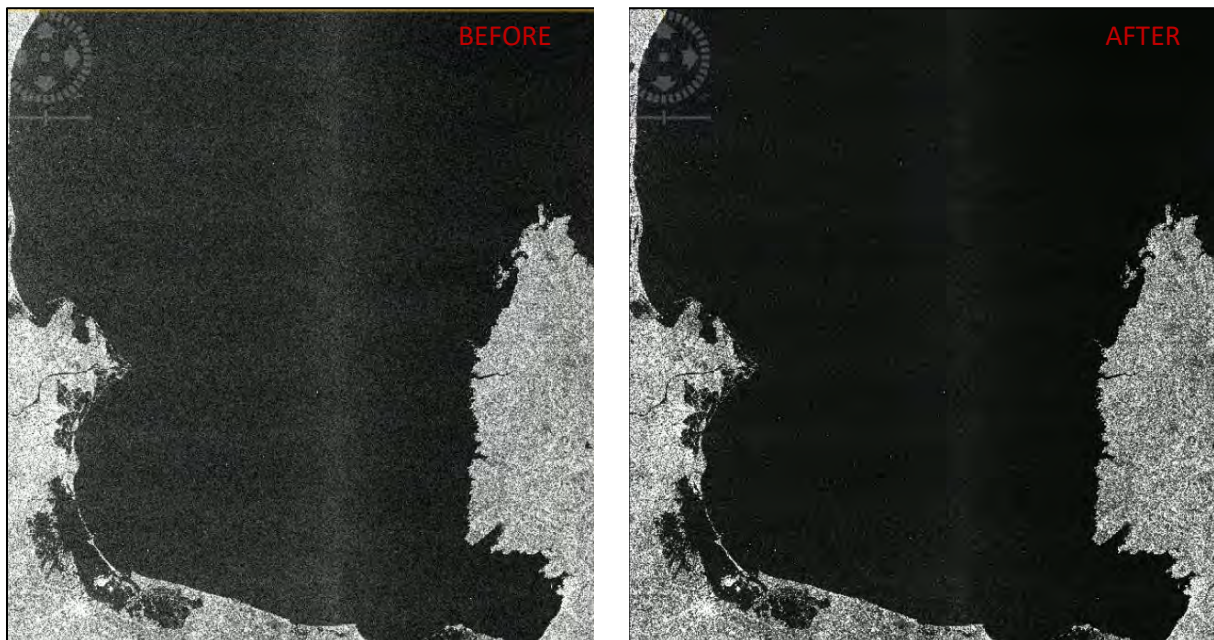
5.6.2 Calibration

In the next step we will apply radiometric calibration. The objective of SAR calibration is to provide imagery in which the pixel values can be directly related to the radar backscatter of the scene. Though uncalibrated SAR imagery is sufficient for qualitative use, calibrated SAR images are essential to quantitative use of SAR data. (See  NOTE 3)

 NOTE 3: Typical SAR data processing, which produces level-1 images, does not include radiometric corrections and significant radiometric bias remains. The radiometric correction is necessary for the pixel values to truly represent the radar backscatter of the reflecting surface and therefore for comparison of SAR images acquired with different sensors or acquired from the same sensor but at different times, in different modes, or processed by different processors. (SNAP Help)





Keep all the default settings.

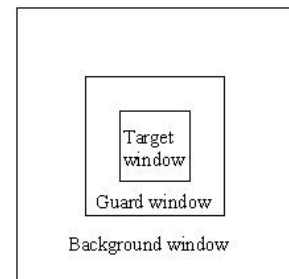


On the image above, we can see the effect of radiometric correction.

5.6.3 Adaptive Thresholding

Adaptive thresholding is a frequently used method for target detection in SAR imagery. The underlying assumption is that targets appear bright on dark background. The adaptive thresholding algorithm is applied in moving window. For each pixel under test (central pixel) a new threshold value is calculated based on the statistical characteristics of its local background: if the pixel value is above the threshold the pixel is classified as target pixel (for more info see  NOTE 4).

 NOTE 4: The specific type of adaptive thresholding algorithm used in the SNAP Ocean Object Detection tool is a Two-Parameter Constant False Alarm Rate (CFAR) Detector. The user defines the parameters of the moving window (image on the right) where the Target window corresponds to one or multiple pixels under test; the Guard window prevents contamination of the background values by the target pixels; the values within the Background window represent the local background and are used to determine the probability distribution function (PDF) of fitted Gaussian distribution.



Credits: SNAP Help


Then the PDF and user defined probability of false alarm (*PFA*) are used to determine the detection design parameter *t* as follows:

$$PFA = \frac{1}{2} - \frac{1}{2} \operatorname{erf} \left(\frac{t}{\sqrt{2}} \right)$$

The decision criterion is then expressed as: $x_t > \mu_b + \sigma_b \iff target$ (target window is single pixel) or as: $\mu_t > \mu_b + \sigma_b \iff target$ (target window contains multiple pixels), where x_t is value of target pixel or μ_t is mean value of target window; μ_b is background mean and σ_b is background standard deviation.

(SNAP Help)

Specify the following parameters:

Target Window Size (m): 30 (the target window size in metres; length of smallest target to detect, See  TIP 2)

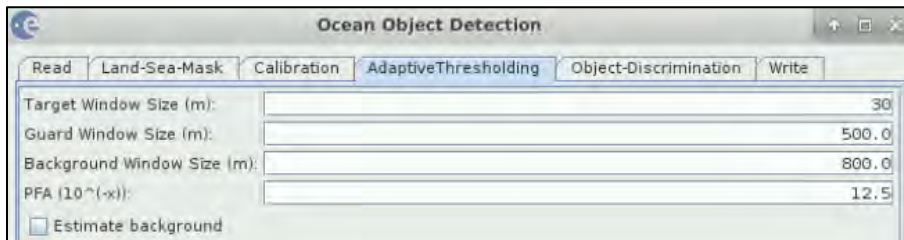
Guard Window Size (m): 500 (the guard window size in metres; size of the largest target to detect)

Background Window Size (m): 800 (the background window size in metres; larger than the guard window size to ensure accurate calculation of the background statistics)

PFA (10^{-x}): 12.5 (positive number for parameter x)



TIP 2: The size of the smallest detectable object is dependent on the data resolution. The Sentinel-1 IW GRDH Product that we are using here has a resolution of 20x22 metres (but pixel spacing 10x10 metres). Therefore, to avoid excessive numbers of false targets we set the smallest detectable target to 30 m, value larger than the spatial resolution.

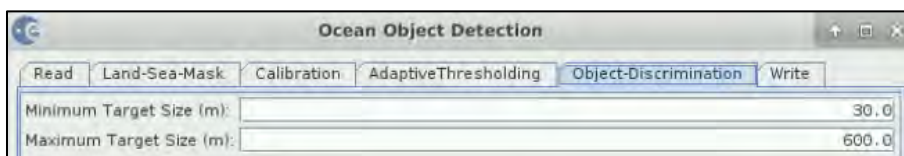


5.6.4 Object Discrimination

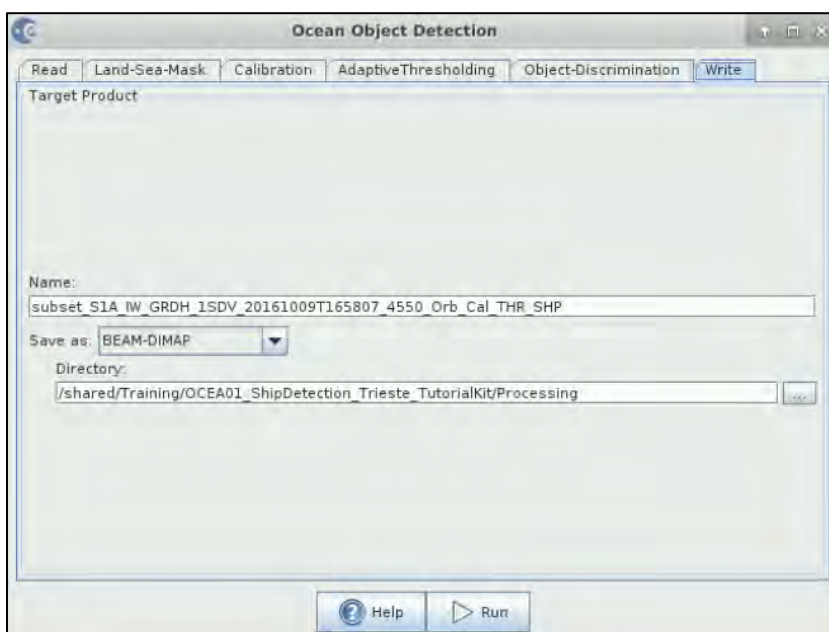
This step is used to filter out false targets based on minimum and maximum size limits. Set the following parameters:

Minimum Target Size (m): 30 (target with dimension smaller than this threshold is eliminated)

Maximum Target Size (m): 600 (target with dimension larger than this threshold is eliminated)



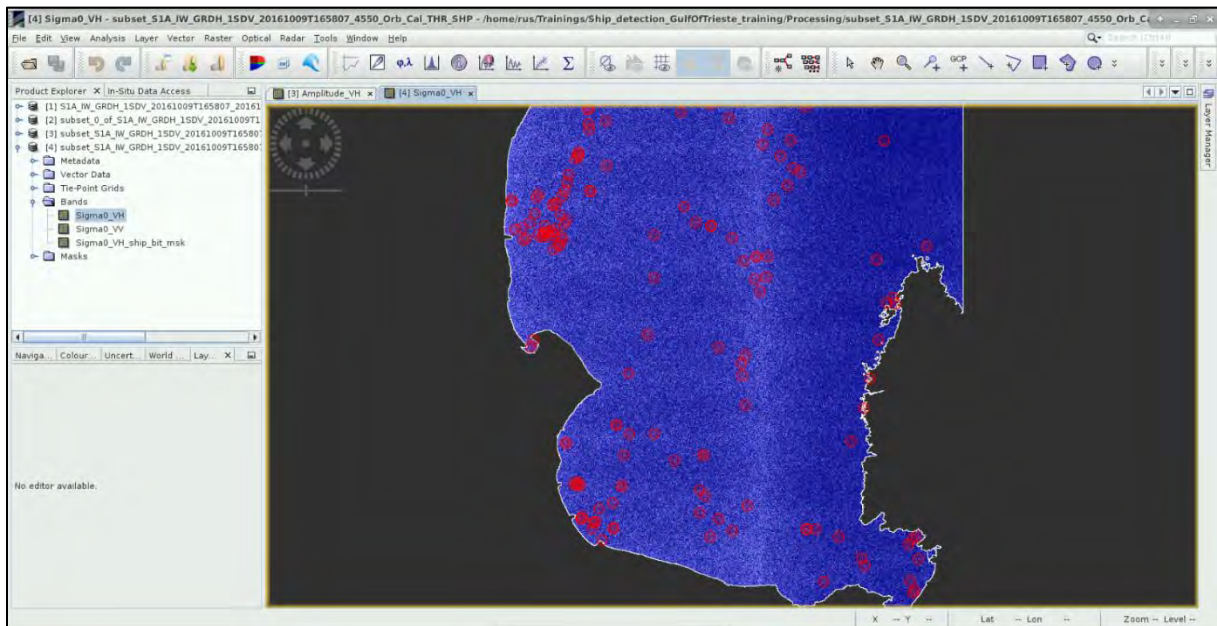
In the last tab of the processor we set the location of the product to our “Processing” folder (/shared/Training/OCEA01_ShipDetection_Trieste_TutorialKit/Processing). Click Run.



Approximate processing time: 5.38 minutes.

In **Product Explorer**, expand the newly created product:

subset_0_of_S1A_IW_GRDH_1SDV_20161009T165807_Orb_Cal_THR_SHP
and open band ***Sigma_VH***

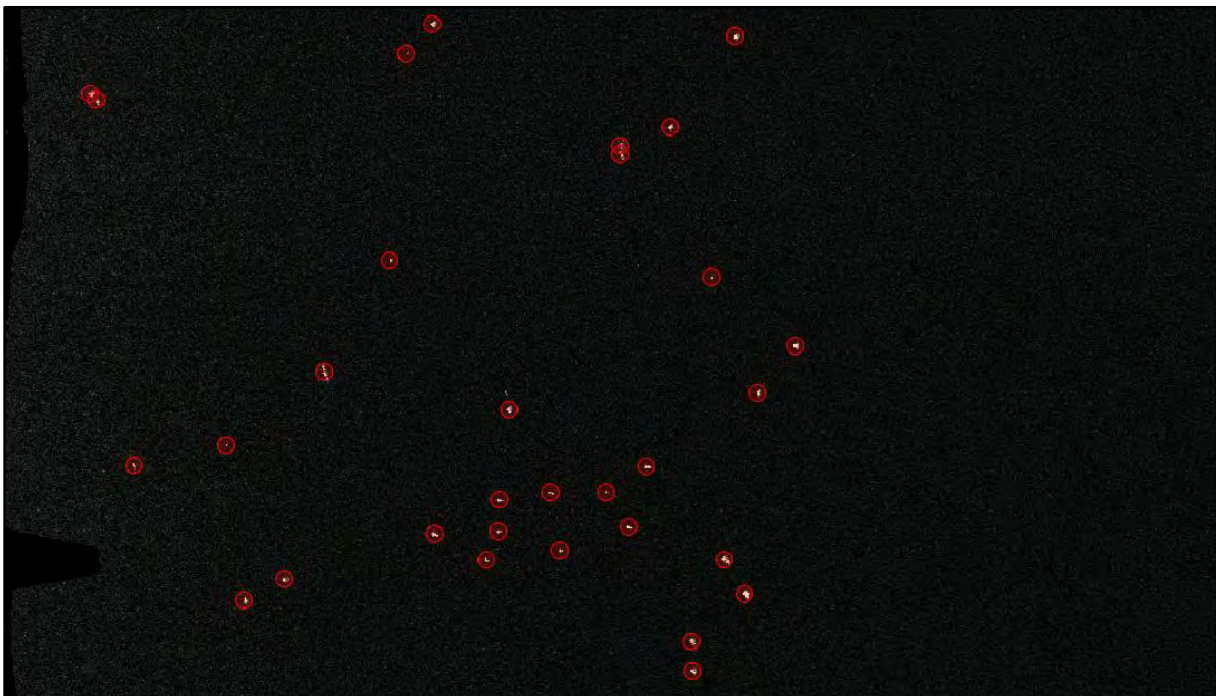


We can see the red circles representing targets but in the current visualization we cannot assess their accuracy. Let's enhance the view a little.

First, go to the **Layer Manager** pane on the right side of the SNAP window (or **View → Tool Windows → Layer Manager**), expand the **Vector data** folder and **deselect *Gulf_of_Trieste_seamask_UTM33***.

Then go to **Colour Manipulation** tab also in the lower left corner and drag the white slider to the right close to the end of the histogram (i.e. approximately to value $6.6E-2$).

Now, we can actually see the bright targets (ships) within the red circles. **Zoom-in** to have better look.



Upon close inspection you can notice a few very small targets were missed. Target detection is all about optimizing the parameters to your data to achieve the lowest number of false detections and simultaneously the lowest number of missed targets. (See 💡 TIP 3)

💡 TIP 3: Try running the detection again with different parameters. Generally, the lower the PFA exponent, the more targets (false and real) you will capture. The same applies to the Target window size: the smaller target window, the more detection (detection of smaller targets but also for example two detections within a large target).

Combinations to try:

1. Adaptive thresholding: **TW**: 15; **GW**: 500; **BW**: 800; **PFA**: 12.5;
Object-Discrimination: **MinTS**: 15; MaxTS: 600
2. Adaptive thresholding: **TW**: 30; **GW**: 500; **BW**: 800; **PFA**: 9.0;
Object-Discrimination: **MinTS**: 30; MaxTS: 600

5.7 Export the results to Shapefile

Now we can export our results to an ESRI Shapefile (.shp) format that is more manageable and can be processed and visualized further in software such as QGIS.

Depending on the version of SNAP you have, there might be a reoccurring bug that prevents simple export of the detections to ESRI shapefile format. Outlined below is a method to export for versions without the bug (OPTION 1) and a work-around method for versions with the bug (OPTION 2).

5.7.1 OPTION 1 – No error

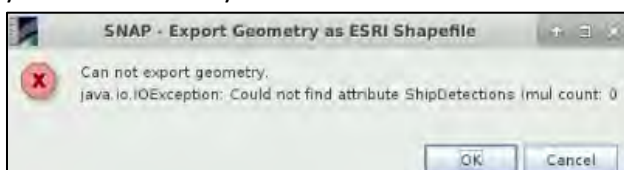
In **Product Explorer**, expand the ship detection product [4] and open the **Vector Data** folder. Right-click on the **ShipDetections** layer and select **Geometry as a Shapefile**.



Save the Shapefile to: **/shared/Training/OCEA01_ShipDetection_Trieste_TutorialKit/Processing**.

5.7.2 OPTION 2 – SNAP versions with error

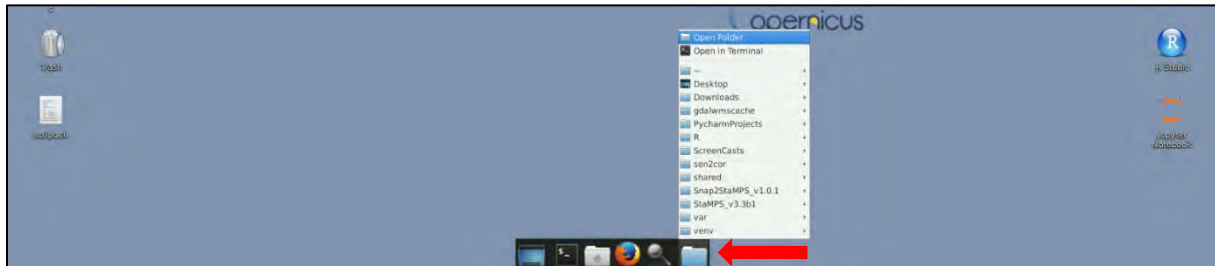
If the approach described in OPTION 1 does not work for you then the version of SNAP installed on your machine likely contains the mentioned error.



The detections are stored in the output product folder as a CSV:

**/shared/Training/OCEA01_ShipDetection_Trieste_TutorialKit/Processing/
subset_S1A_IW_GRDH_1SDV_20161009T165807_Orb_Cal_THR_SHP.data/vector_data/ShipDetecti
ons.csv**

However, since our data is still not projected to a known projection such as WGS84, the table only contains pixel coordinates of the detections. We can get the detections and their lat/lon positions from the processing log. To do this, you need to open the **File Explorer**.



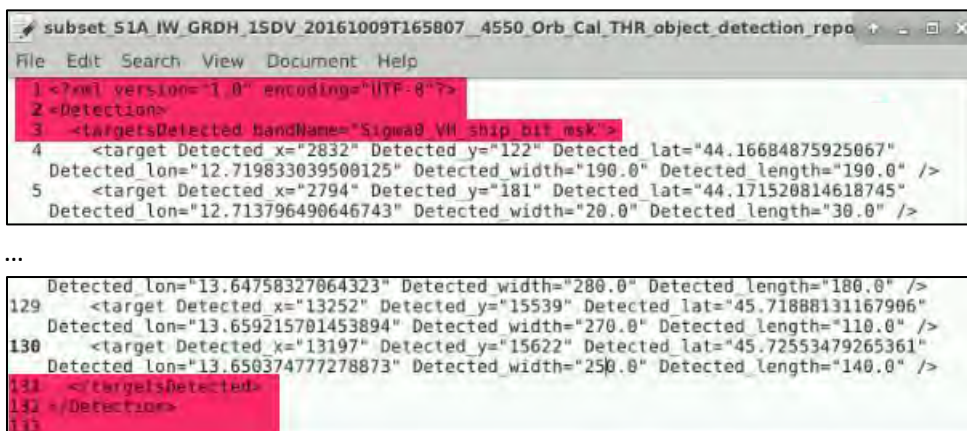
In the top of the file explorer window, go to **View → Show hidden files**. Then navigate to **/home/rus/.snap6/var/log**.

Here you can find a file named:

subset_S1A_IW_GRDH_1SDV_20161009T165807__4550_Orb_Cal_THR_object_detection_report.xml

Right click the file and go to **Open With → Open With “Mousepad”**.

When the file opens in a text editor delete first three and last three lines (including the empty line) as shown below.



Then go to **File → Save as**, and save the file to the **Processing** folder as **object_detection_report.txt**

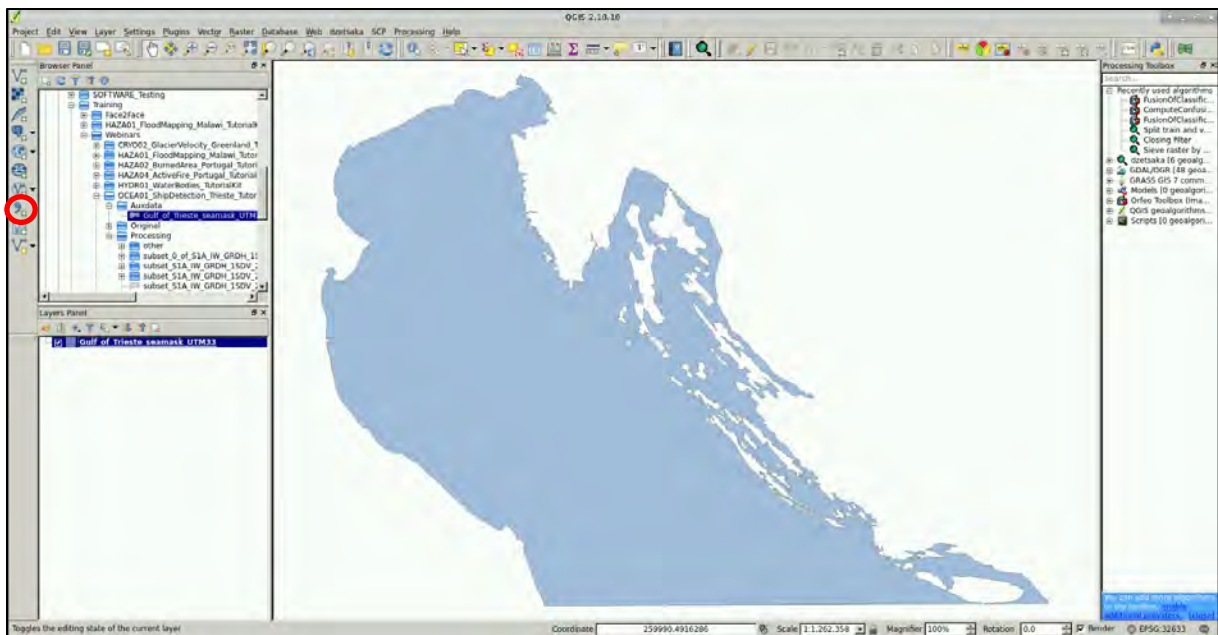
Now, we can open QGIS.

Go to **Applications → Processing** and open **QGIS Desktop**. Navigate to **/shared/Training/OCEA01_ShipDetection_Trieste_TutorialKit/Auxdata** in the **Browser Panel** on the left and double click the **Gulf_Of_Trieste_seamask_UTM33.shp** (see 💡 TIP 4).



TIP 4: To change the appearance of the layer right-click the layer in the **Layers Panel** in lower left and go to **Properties**. Click on **Simple fill** and edit the appearance or select one of the predefined settings on the right. Click **OK**.

Now, click on the **“Add Delimited Text Layer”**  in the vertical menu on the left of the window.

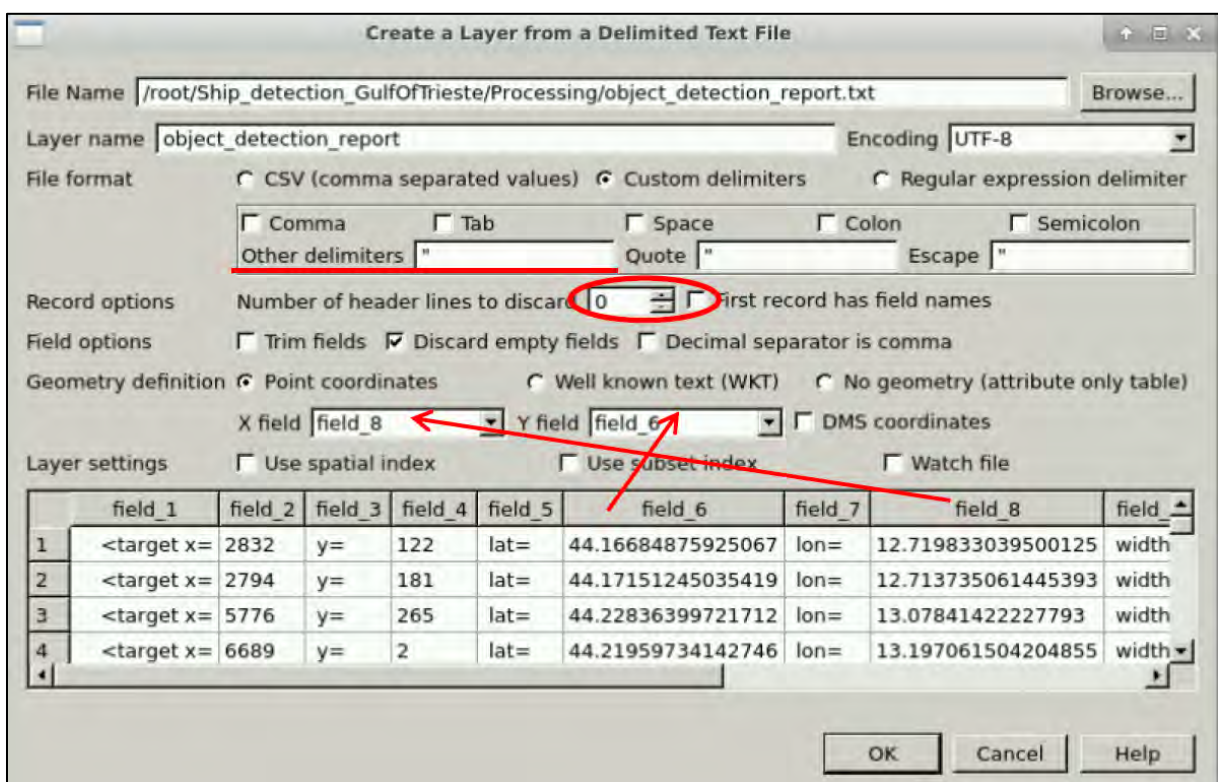


In the window that opens, click **Browse** and navigate to the saved **object_detection_report.txt**

A table will appear in the bottom of the window. Select **Custom delimiters**, unselect all other delimiters and in **Other Delimiters** type: “.

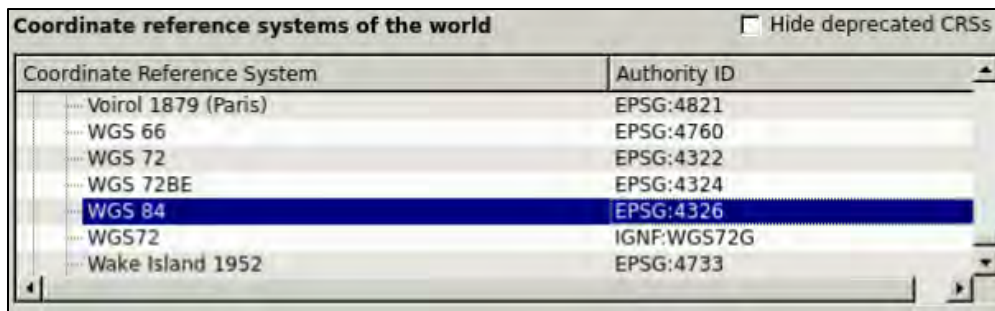
Make sure that the “**First record has field names**” in **NOT** selected.

Keep the remaining options and set the X and Y fields exactly as shown below (**X field: field_8** and **Y field: field_6**) (x field = Longitude, y field = Latitude).



Then, click **OK** and the Window “**Coordinate Reference System Selector**” should pop up.

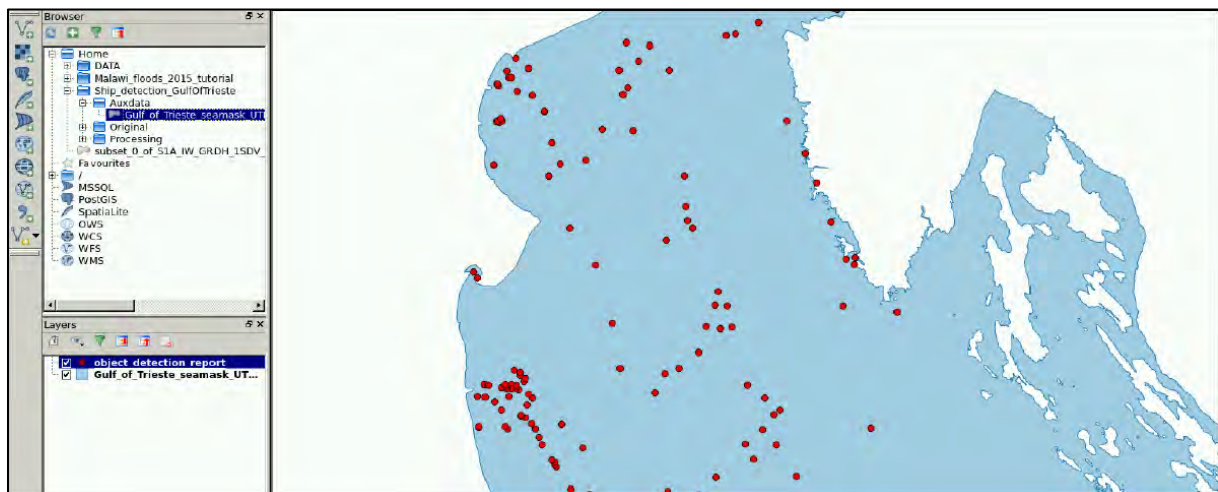
At the “**Coordinate Reference Systems of the World**”, under the “**Coordinate Reference System**” tab, expand the “**Geographic Coordinate Systems**” and choose the **WGS84** with ID: **EPSG: 4326**. Click **OK**.



In case the Window “**Coordinate Reference System Selector**” will not pop up, we need to check the coordinate reference system of the data.

Right-click the new layer and go to **Properties** → **General**.

Check that the **Coordinate reference system** is set to **EPSG 4326** which corresponds to WGS 84 geographic coordinate system. Click **OK**.



We can now right click the “**object_detection_report**” layer and go to **Save as**.

A variety of formats including shapefile and SHP are available.

Let’s choose **ESRI Shapefile** format, click on “**Browse**” and save the layer to the “**Processing folder**” with the name “**ShipDetection_Points.shp**” (Check **CRS** is set to EPSG: 4326, WGS 84). Click **OK**.

5.8 Visualization in QGIS

Now, we can proceed with visualization of our results in QGIS. If not already opened, go to **Applications** → **Processing** and open **QGIS Desktop**. Navigate to:

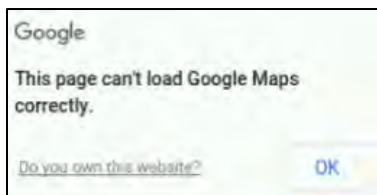
/shared/Training/OCEA01_ShipDetection_Trieste_TutorialKit/Processing folder in the Browser Panel on the left and double click the “**ShipDetection_Points.shp**”. (see 💡 TIP 5)



TIP 5: To change the appearance of the layer, right-click the layer in the Layers Panel in lower left and go to **Properties**. Click on Simple fill and edit the appearance or select one of the predefined settings on the right. Click **OK**.

You can also set labels to show, such as the estimated length of the target in **Properties** → **Labels**.

To visualize the location better, let’s open a basemap from the **Open Layers** plugin (see 💡 TIP 6). Go to **Web** → **OpenLayers plugin** → **Google Maps** → **Google Physical**.



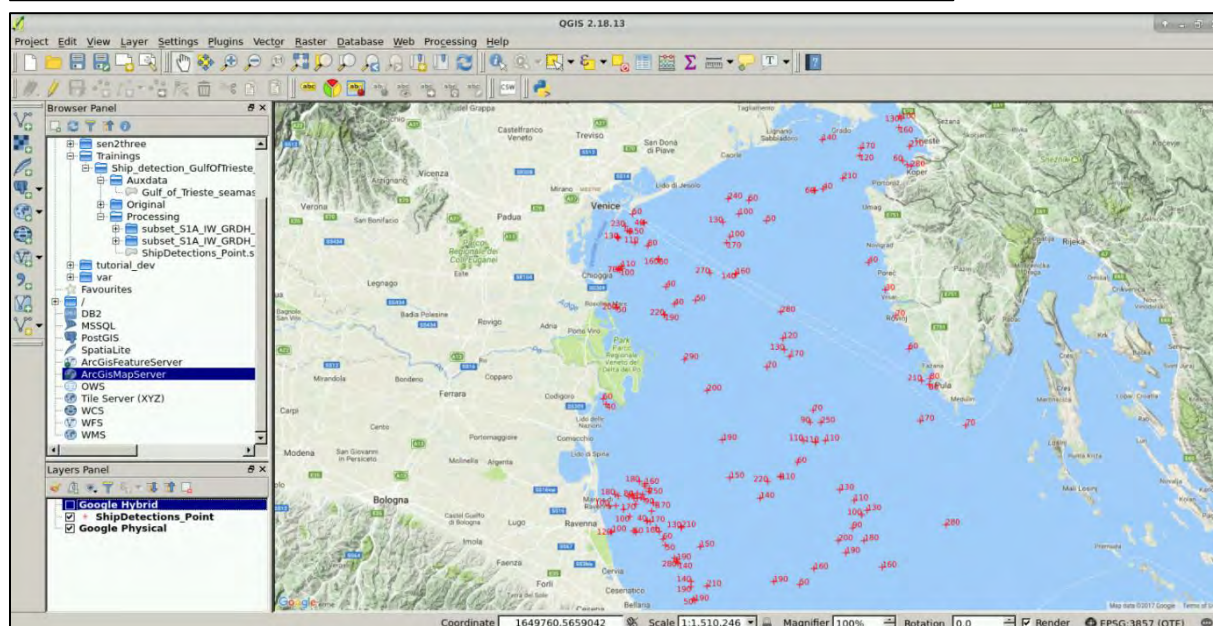
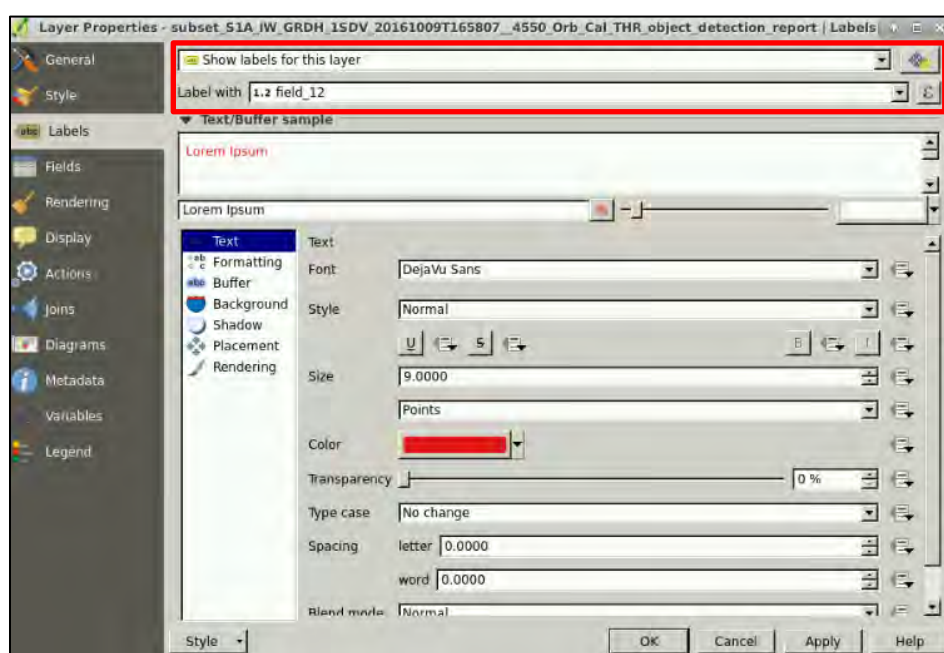
In case this message appears, choose another basemap (e.g. Bing).

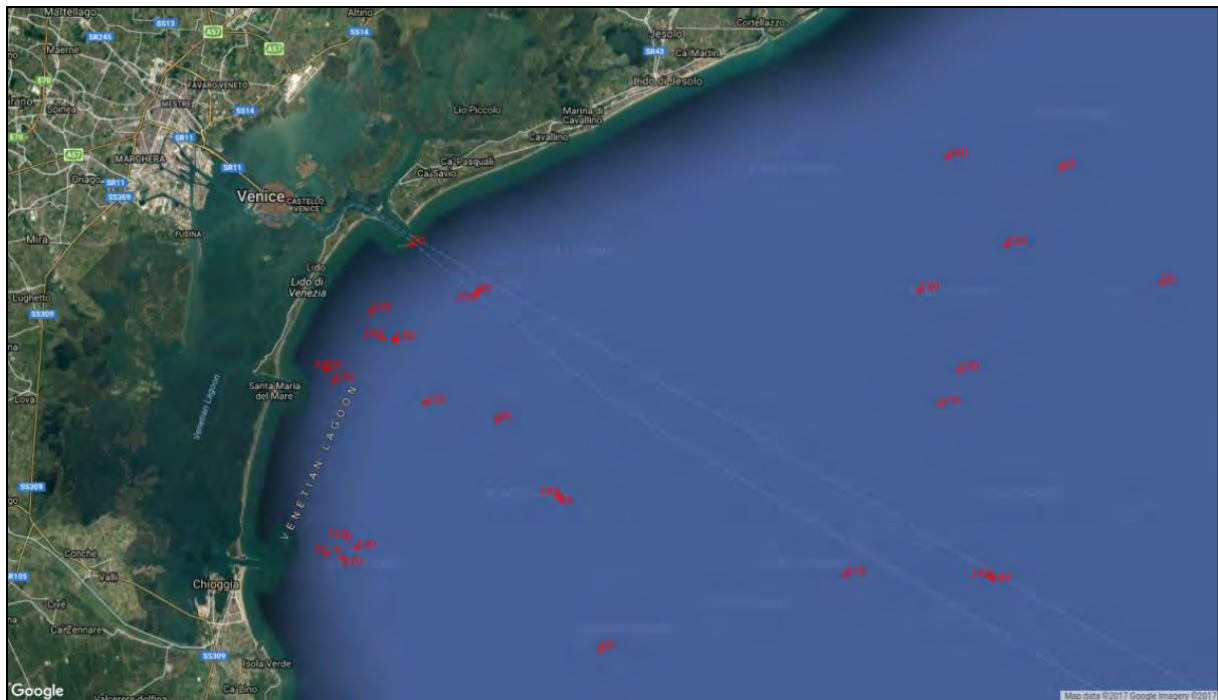


TIP 6: If you do not have the OpenLayers plugin installed you can do so by going to **Plugins → Manage and Install Plugins**. Search for OpenLayers and then click **Install**.

We can then enhance the visualization by adding label containing the length of the detected object. The length value is stored in “*field_12*” of the attribute table. Right-click the layer and go to **Properties → Labels**. Select “Show labels for this layer” and **Label with:** field_12.

You can also change the Color. Click **OK**.





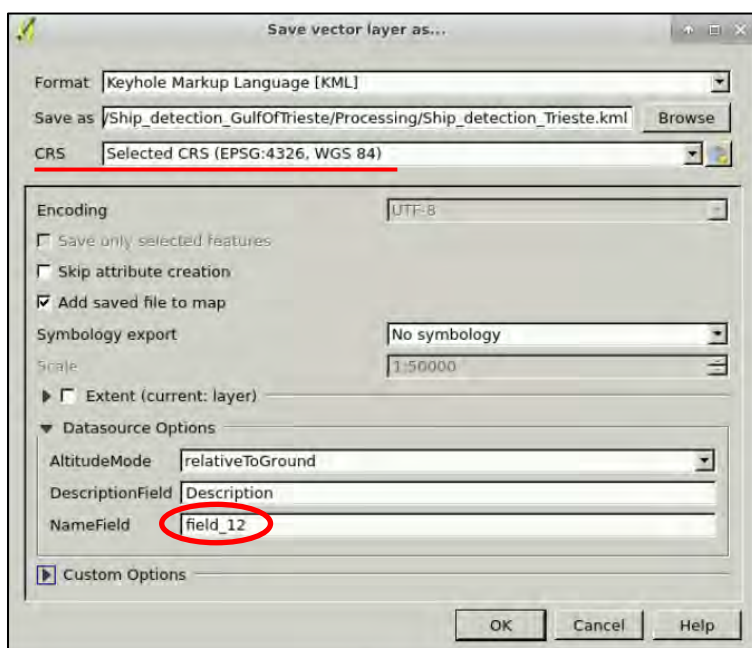
6 Other suggested steps

6.1 Downloading the outputs from VM and visualization in Google Earth

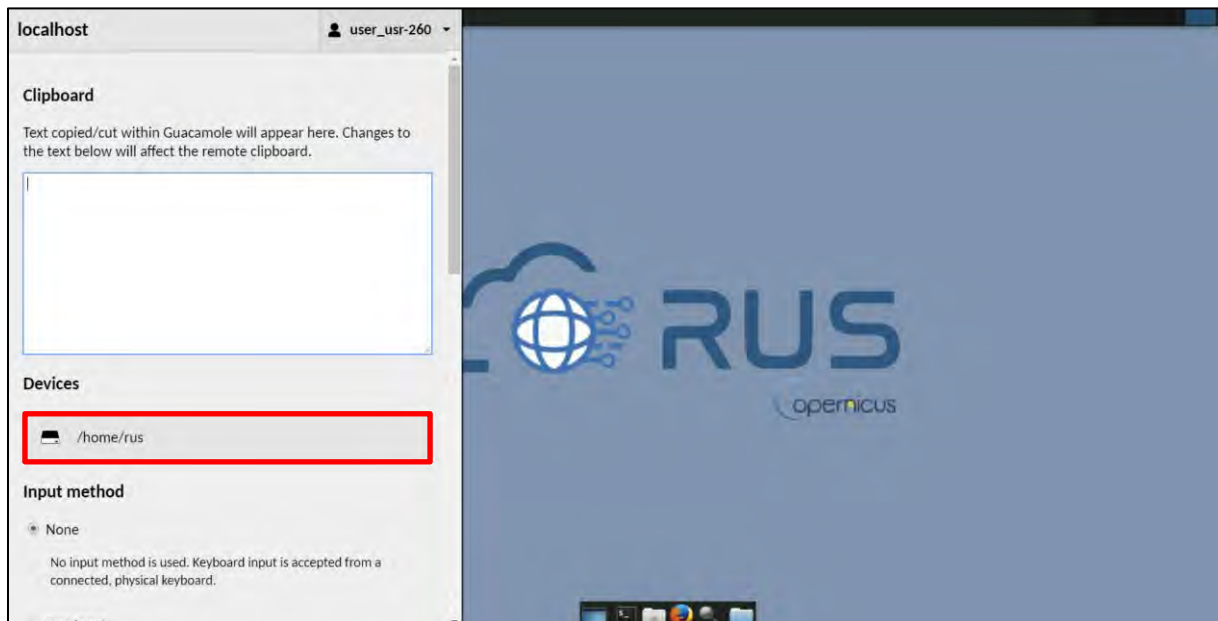
We can also visualize the detections in Google Earth by exporting them to KML format. We can do this by right-clicking on the the “*ShipDetection_Points.shp*” and go to **Save as**.

Choose **KML** format, click on “Browse” and save the layer to the “**Processing**” folder with the name “*ShipDetection_Points.kml*” (Check **CRS** is set to EPSG:4326, WGS 84).

Expand **Datasource Options**. At the **NameField** write: “field_12” (contains the length of the targets). Click **OK**.



Close the QGIS without saving and then press **Ctrl+Alt+Shift**. A pop-up window will appear on the left side of the screen.



Click on bar below **Devices**, the folder structure of your VM will appear.

Navigate to your Processing folder and **double click the created KML file “*Ship_detection_Trieste.kml*”** to download it to your local computer.

Once the KML file has been downloaded you can visualize in your local Google Earth installation or upload it to Google Earth Web.



