

MAFIS

MULTIPLE ACTOR FOREST INFORMATION SERVICE

Addressed to:

PRIVATE SECTOR



- Forest owners
- Wood-forestry value chain



improved target areas identification for plantation
multi-year plans for wood supply

European Union Timber Regulation traceability (country of harvest, species, quantities, supplier etc);

common information base for efficient interactions with administrations and control entities

PUBLIC SECTOR

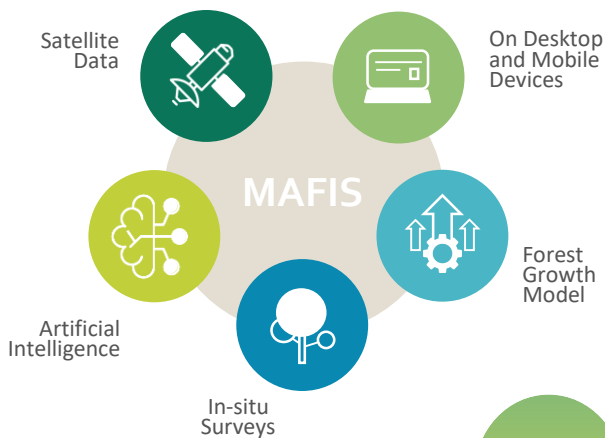


- Supranational entities and administrations
- National ministries and administrations
- Research entities
- Regions and municipalities



updated statistics
policy making
legislation and agreements
research projects support
forest exploitation plan and incentives
impact verification
authorizations and control

MAFIS is an accurate and innovative monitoring service for FORESTS



MAFIS

routinely produces,

at affordable customer price,

high accuracy information

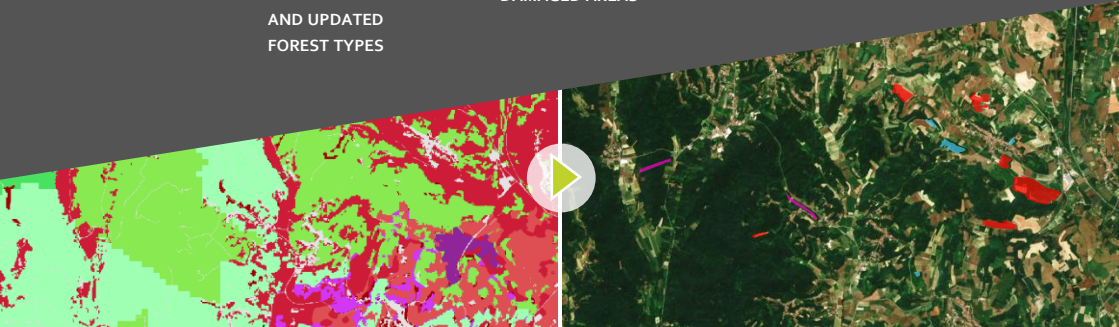
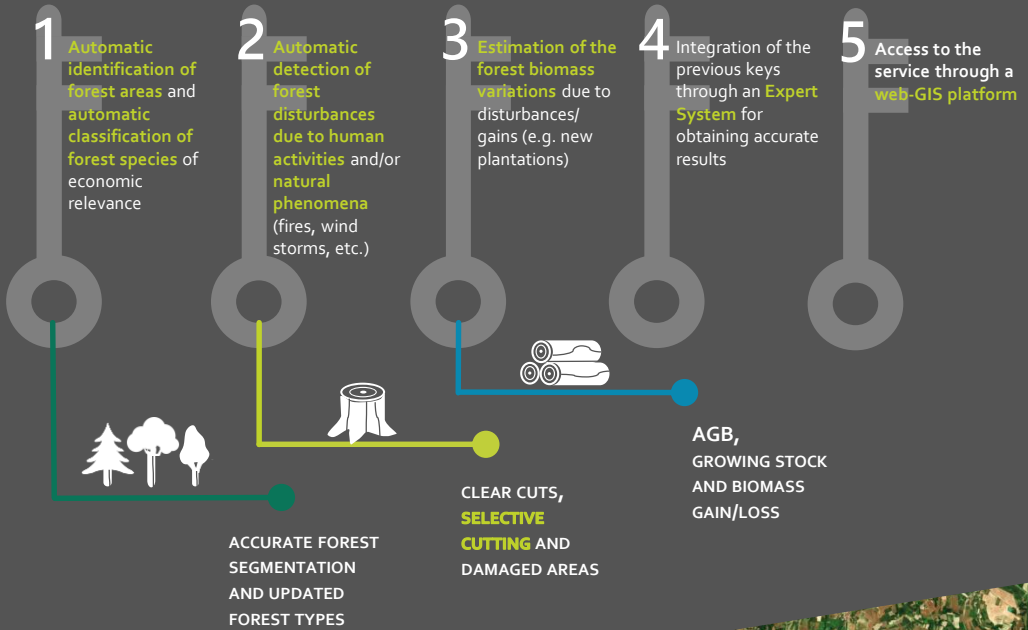
consistent at local and supranational level, and is based on

a specific methodology that exploits **Artificial Intelligence** and **Cloud Computing**

Powered by:



Five key elements:



MAFIS develops an integrated methodology that combines multi-temporal Earth Observation satellite data as well as weather satellite data within a forest growth model, to provide regular and reliable information about forest status and consistency in support of forest sustainable management both for industrial and institutional customers. Main outputs of MAFIS are the forest classification layer, the forest disturbances layer and estimates of forest biomass. In particular, SAR data plus 3 Artificial Intelligence techniques will contribute to expand MAFIS capabilities to the detection of selective cutting activities on conifer forests.

MAFIS runs on Cloud Infrastructure and is easily available through a web service delivery platform, accessible on PC-stations and remote devices. Validation of the service includes the assessment with VHR EO products, forest national inventory data, in-situ surveys and results of other past relevant projects/researches.

MAFIS project is developed in collaboration with a number of national and regional stakeholders in Italy and 2 European forestry industry associations. The service will initially be implemented in two test areas in Italy, in the course of 2020, and later on it may become a fully fledged operational service in Italy and other EU countries.

Follow the project on:



www.gmatics.eu/MAFIS

For more information:



info@gmatics.eu