



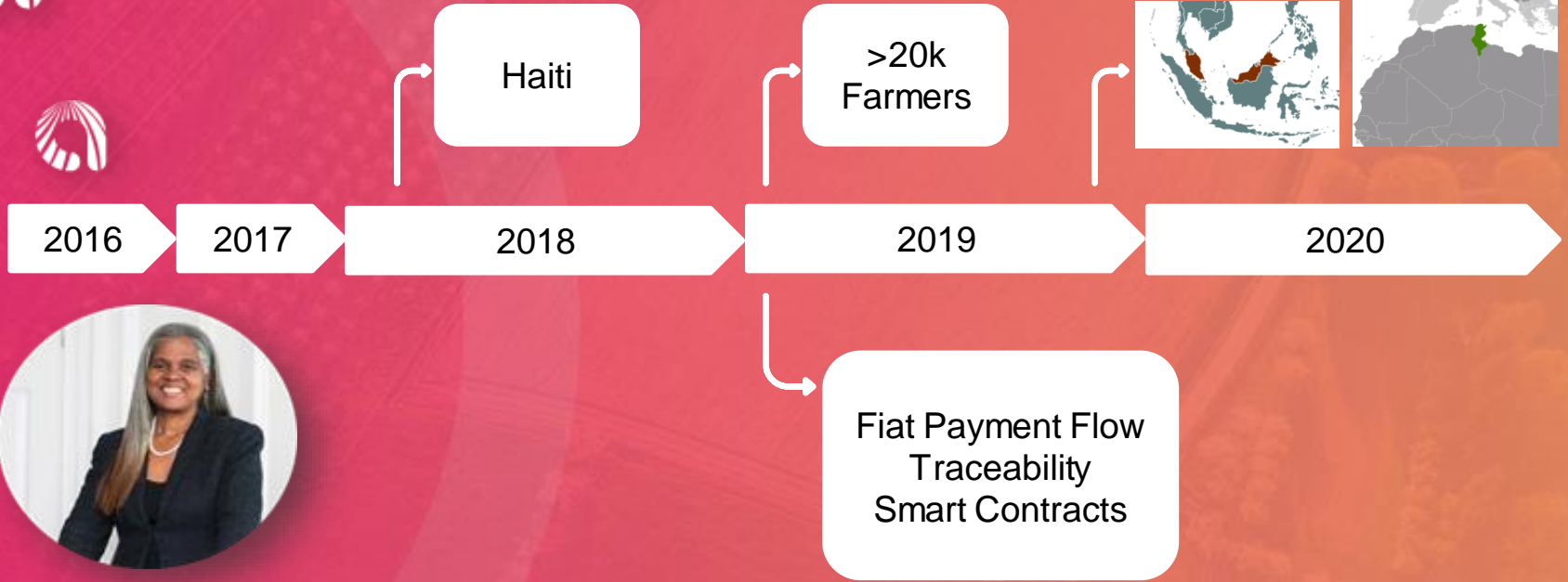
AGRI
LEDGER

DLT/EO for Sustainable Food Systems

Mohammed Chunggaze

ESA

12 September 2019

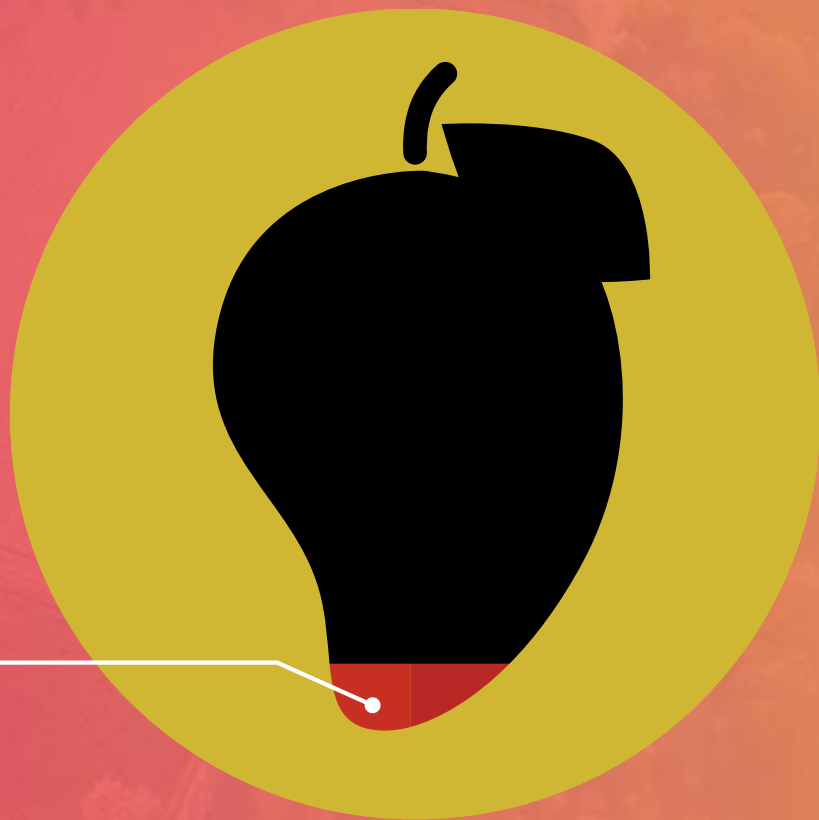


GENEVIEVE LEVEILLE
Chief Executive Officer
Founded 2016



Do you know **what percentage** a farmer earns in Haiti for a mango sold in the US at \$3?

2%







1. Farmer



2. Data collection



3. Broker future
Trade agreement



4. Pre-harvest Survey



5. Collection of
Products



6. Transport



7. Processing facility



10. Payment



8. Shipping



13. Customer



12. Supermarket



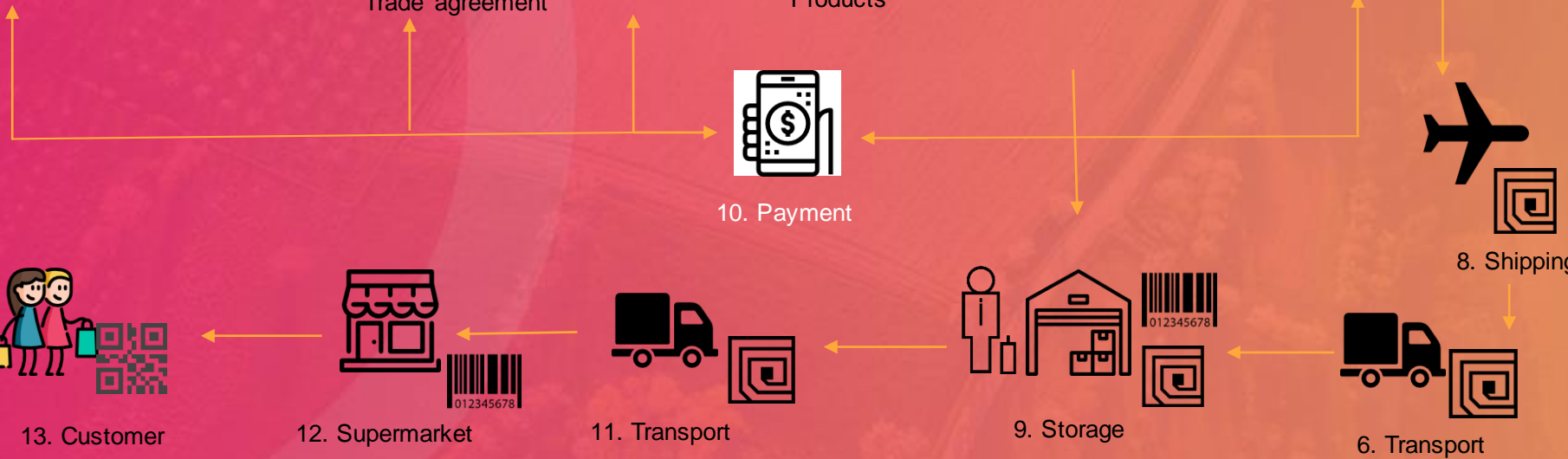
11. Transport

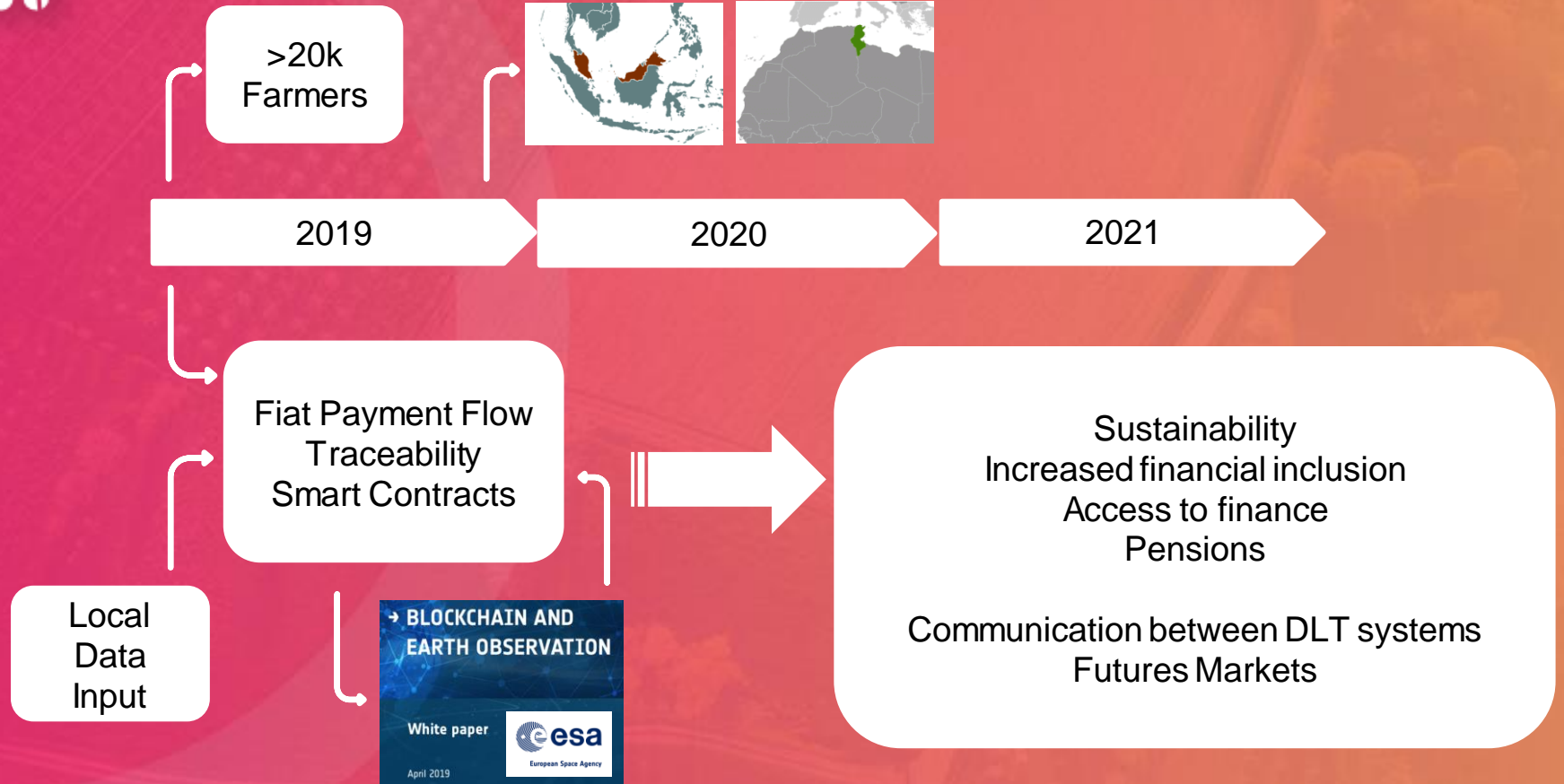


9. Storage



6. Transport

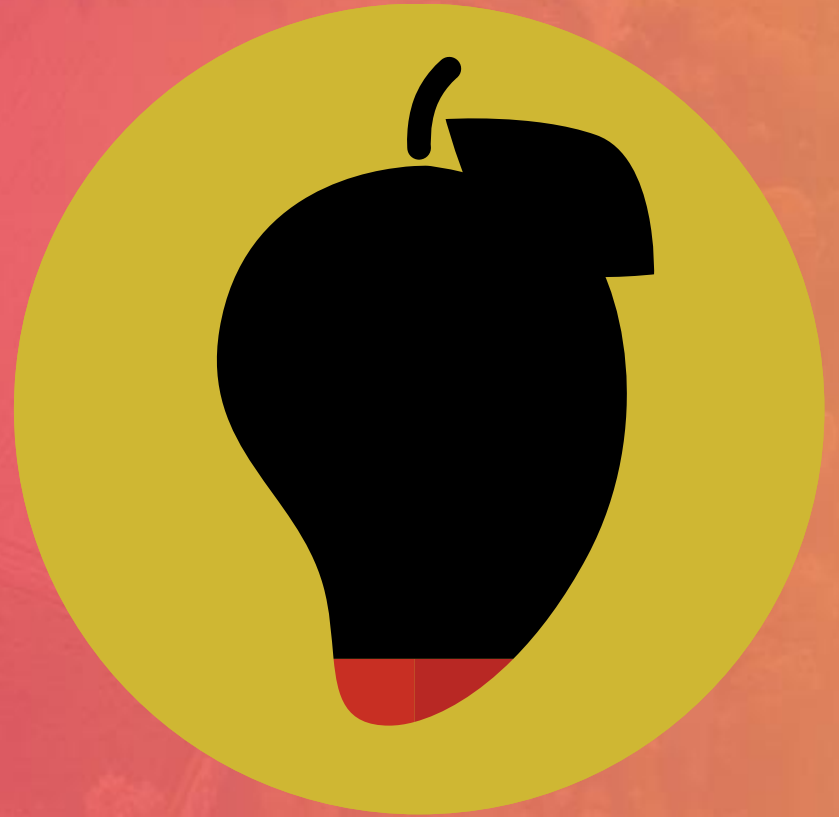






Opportunity:

- Access to write to DLT
- Perform data-analytics
- Share data





A G R I
L E D G E R

Thank You

mohammed.chunggaze@agriledger.com