

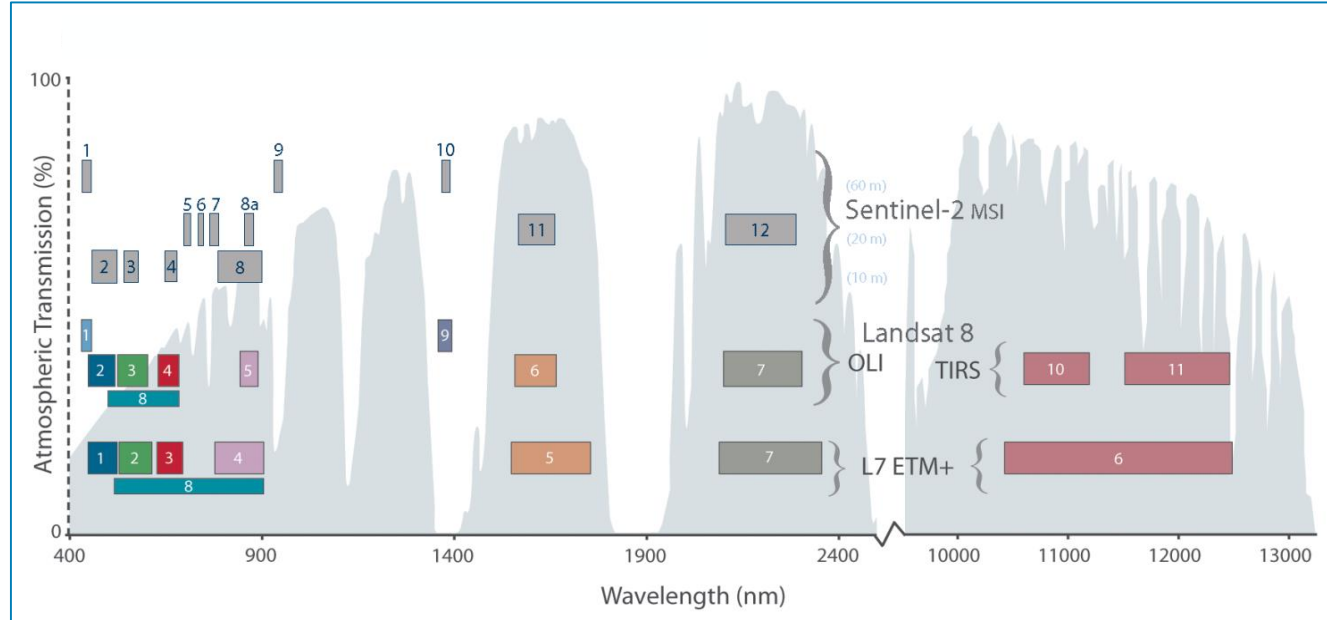


# Sentinel-2 Mission

Ferran Gascon  
Copernicus Sentinel-2 Mission Manager  
20 September 2021

# Sentinel-2 Mission

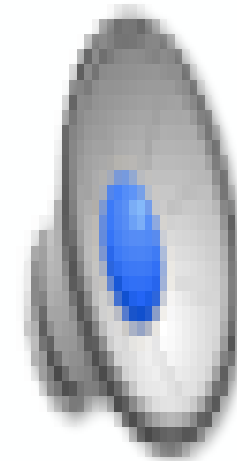
- ✓ Optical multi-spectral mission for the monitoring of land and coastal regions.
- ✓ Constellation of two satellites (Sentinel-2A and Sentinel-2B).
- ✓ Polar sun-synchronous orbit at an altitude of 786km, with LTDN 10h30.
- ✓ Swath of 294km.



- ✓ Free & open products for feeding a large range of applications.

# Sentinel-2 Mission Status Highlights

- ✓ Good health of both Sentinel-2A and Sentinel-2B satellites.
- ✓ Sentinel-2 operated beyond the initially required observation scenario.
- ✓ Top European EO mission (e.g. in terms of scientific peer-reviewed publications and data volume distributed).
- ✓ Towards Sentinel-2 Collection-1 (reprocessing of the archive).
- ✓ New pilot products available (Level-2H and Level-2F).



*Normalised Difference Vegetation Index (NDVI) dynamic map by  
[https://apps.sentinel-hub.com/digital\\_twin\\_sandbox/](https://apps.sentinel-hub.com/digital_twin_sandbox/)*

*Copyright: Contains modified Copernicus Sentinel data  
(2021) processed by Sinergise*

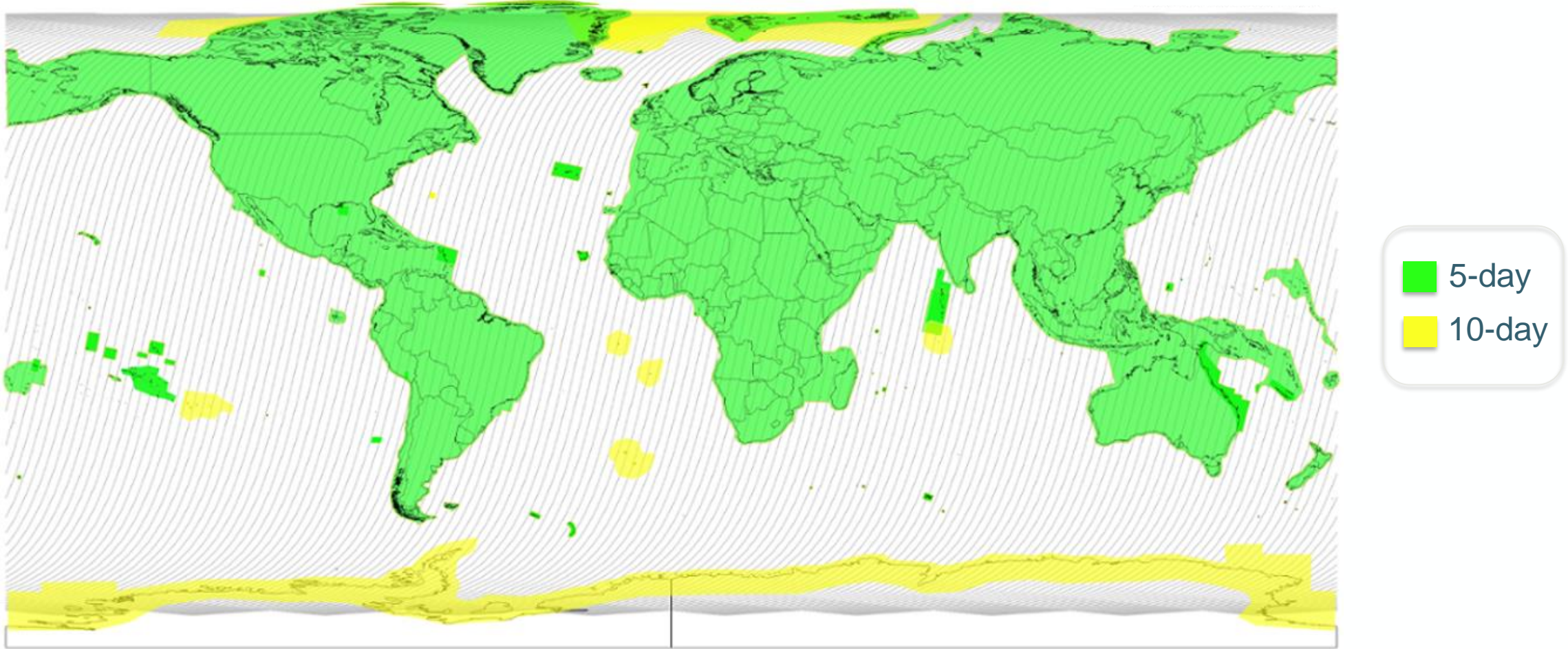


# Schedule Overview



Type	Code	Description	Users	Coverage	Distribution
Core Products	Level-1B	Top-of-atmosphere radiances in sensor geometry	Expert users	Alps and Norway	FTP (rolling archive) available on request
	Level-1C	<b>Top-of-atmosphere reflectances in cartographic geometry</b>	All users	Global	Copernicus Data Hubs (full archive)
	Level-2A	<b>Surface reflectances in cartographic geometry</b>			
Pilot Products	Level-2H	Harmonised Landsat-8+Sentinel-2 surface reflectances in cartographic geometry	Ad hoc	Pilot productions	FTP
	Level-2F	Fused Landsat-8+Sentinel-2 surface reflectances in cartographic geometry			

# Observation Scenario



# Sentinel-2 products performance status



THE EUROPEAN SPACE AGENCY

esa

Sentinel

Search...

Missions User Guides Technical Guides Thematic Areas Data Access Toolboxes

Home / Technical Guides / Sentinel-2 MSI / Data Product Quality Reports

## Data Product Quality Reports

The MPC-CC provides a monthly status of the quality of Sentinel-2 L1C and L2A products via respective Data Quality Reports (DQR). The DQRs provides information on the monitoring and measurement of L1C and L2A product performances against the proposed specification, viz:

**Geometric Performance**

- Geometric Calibration Status
- Absolute Geolocation
- Multi-Spectral Registration
- Multi-Temporal Registration

**Radiometric Performance**

- Radiometric Calibration Status
- Radiometric Uncertainty
- Noise
- Modulation Transfer Function

It also documents observed anomalies and known issues, the list of defective pixels, and any processing chain improvements resulting in an increment of the Processing Baseline.

**TECHNICAL GUIDES**

- Sentinel-1 SAR
- Sentinel-2 MSI
  - MSI Instrument
  - Products and Algorithms
  - Processing Baseline
  - Calibration and Validation
  - **Data Product Quality Reports**
    - Anomaly Database
  - POD Instruments and Products
  - Appendices
- Sentinel-3 OLCI
- Sentinel-3 SLSTR
- Sentinel-3 Synergy
- Sentinel-3 Altimetry
- Sentinel-5P TROPOMI

L1C report: <https://sentinel.esa.int/documents/247904/685211/Sentinel-2-L1C-Data-Quality-Report.pdf/336cc953-28fc-8de5-bb0a-9ce5ed002df0?t=1620402613979>

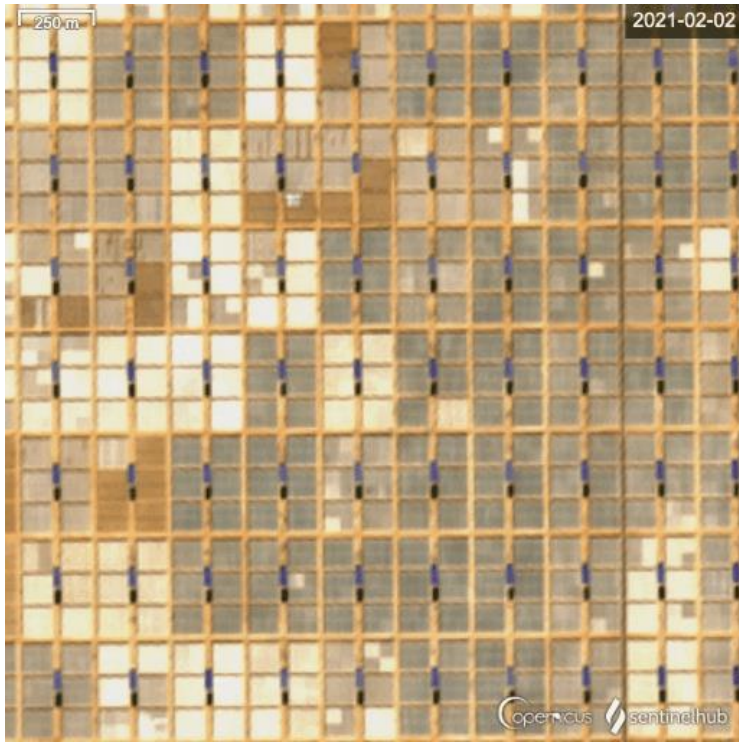
L2A report: <https://sentinel.esa.int/documents/247904/685211/Sentinel-2-L2A-Data-Quality-Report.pdf/8fbbbe100-19ce-4d87-acac-a68fff5f57d0?t=1620402888754>



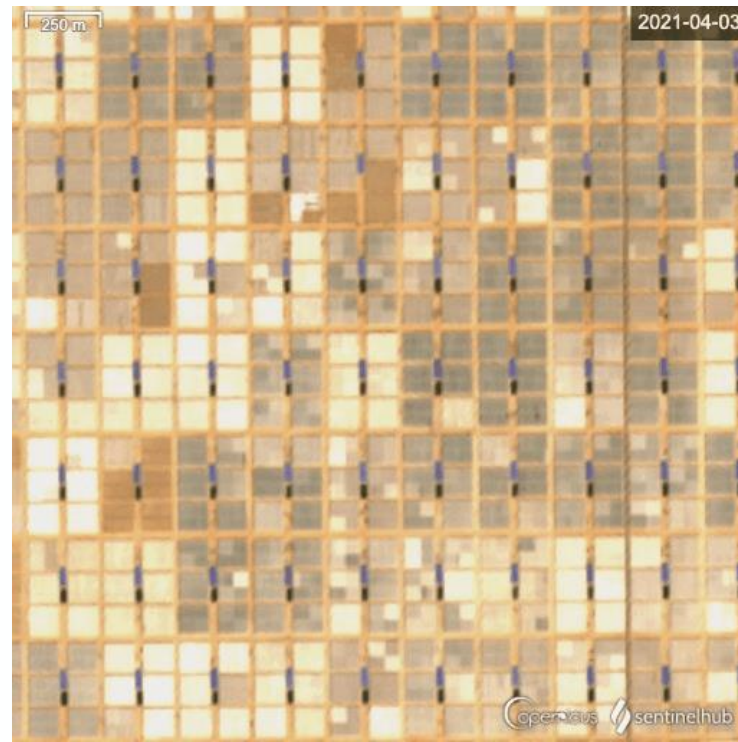
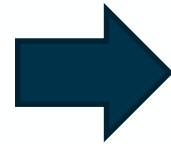
# New Sentinel-2 products geometric refinement

Improvement of previous in-flight performances :

- ✓ Absolute geolocation accuracy from 11m improved to **8 m** (CE95).
- ✓ Multi-temporal co-registration accuracy from 12m improved to **5 m** (CE95).



Not Refined Geometry



Refined Geometry



Egypt's former desert



Copyright: New China TV

Copyright: contains modified Copernicus Sentinel data (2020), processed with Sentinel Hub EO Browser

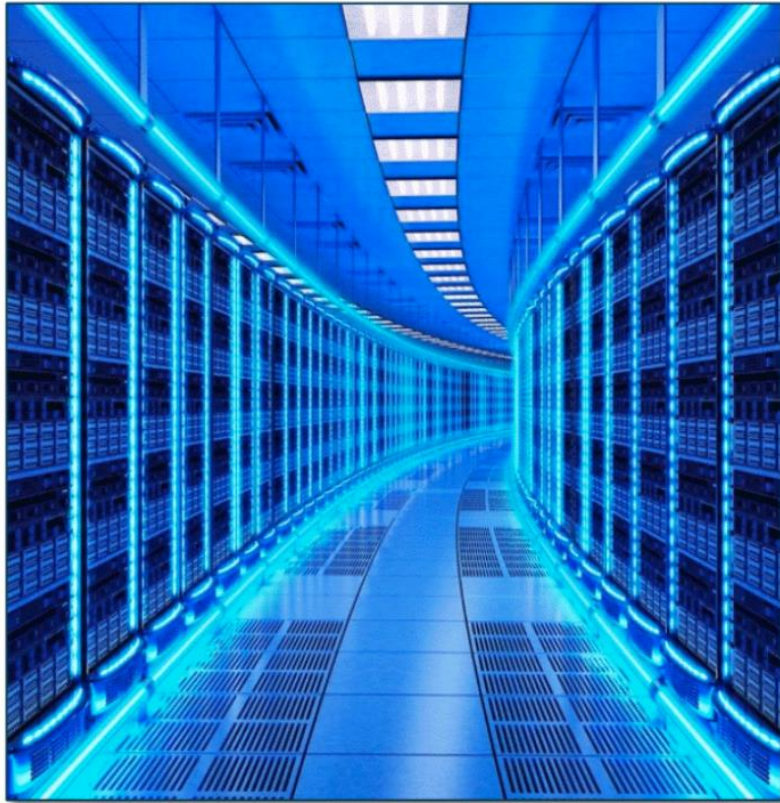


# Mission Outlook (up to 2022)



- ✧ Sentinel-2 archive reprocessing to generate Collection-1 (pending EC approval).
- ✧ Improvement of Level-1C and Level-2A products (as baseline for Collection 1 and beyond).
- ✧ Further expansion of the Observation Scenario (pending feasibility analysis).
- ✧ Generation of additional Level-2H and Level-2F pilot productions for evaluation.
- ✧ Distribution of Sentinel-2 GRI (Global Reference Image) as a free & open product.

# Towards Sentinel-2 Collection 1

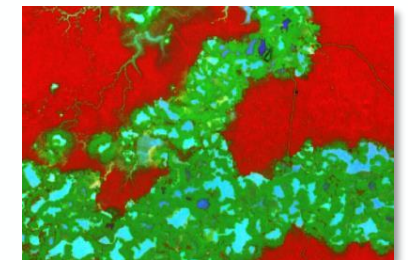
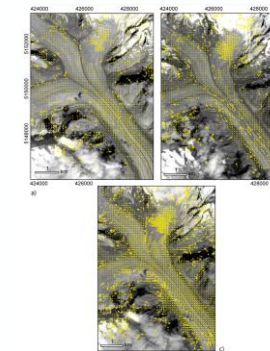
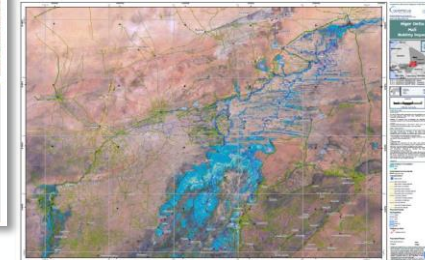
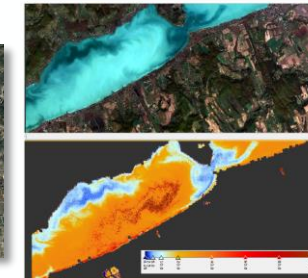
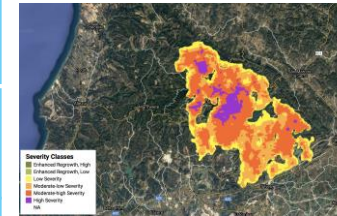
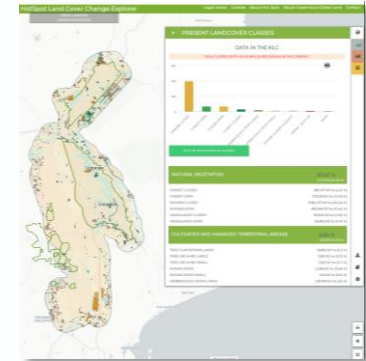
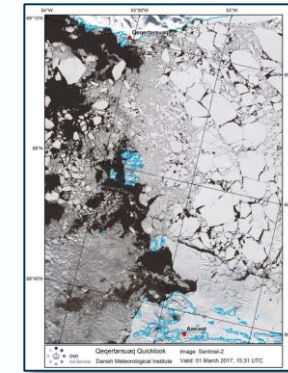


- Collection 1 will be generated reprocessing full S2 archive for both Level-1C and Level-2A products.
- Reprocessing campaign foreseen to start during Q4 2021 (pending approval by the European Commission) and data available to users during 2022.
- New processing baselines for Level-1C and Level-2A products.
- Collection 1 will be CEOS Analysis Ready Data for Land (CARD4L) compliant (cf. <http://ceos.org/ard> ).

# Sentinel-2 used in most Copernicus Services...



<b>CEMS</b> Copernicus Emergency Management Service	<ul style="list-style-type: none"> <li>- Emergency response to rapid mapping (burnt area, flood, landslides, volcanoes)</li> <li>- Risk recovery (e.g. crop change, floods)</li> <li>- Validation (e.g. fires, floods, landslides)</li> <li>- EFFIS/GWIS (Burned area mapping, fire severity and vegetation recovery)</li> </ul>
<b>CMEMS</b> Copernicus Marine Environment Monitoring Service	<ul style="list-style-type: none"> <li>- Sea-ice charting</li> <li>- Coastal waters Turbidity</li> <li>- Coastal waters Total Suspended Matter</li> </ul>
<b>CLMS</b> Copernicus Land Monitoring Service - Global and Pan-European Components	<ul style="list-style-type: none"> <li>- Hot Spot Monitoring for EU field projects and international policies</li> <li>- Global Mosaics</li> <li>- Inland waters Turbidity</li> <li>- Inland waters Total Suspended Matter</li> <li>- Biophysical products</li> <li>- Land cover products</li> </ul>
<b>CSS</b> Copernicus Security Service Copernicus Maritime Surveillance Service European Maritime Safety Agency / CleanSeaNet	<ul style="list-style-type: none"> <li>- Oil spill detection and polluter identification (CleanSeaNet)</li> <li>- Maritime surveillance (e.g. ship detection, search and rescue, anti-piracy)</li> </ul>
<b>CSS – SEA</b> Copernicus Security Service Support to External Action	<ul style="list-style-type: none"> <li>- Up-to-date background information</li> <li>- Integration with very high resolution imagery</li> <li>- Feature of interest extraction</li> </ul>
<b>C3S</b> Copernicus Climate Change Service	<ul style="list-style-type: none"> <li>- Glaciers mapping</li> <li>- Glaciers flow velocities</li> </ul>



... as well as in national services, and the scientific and commercial domains

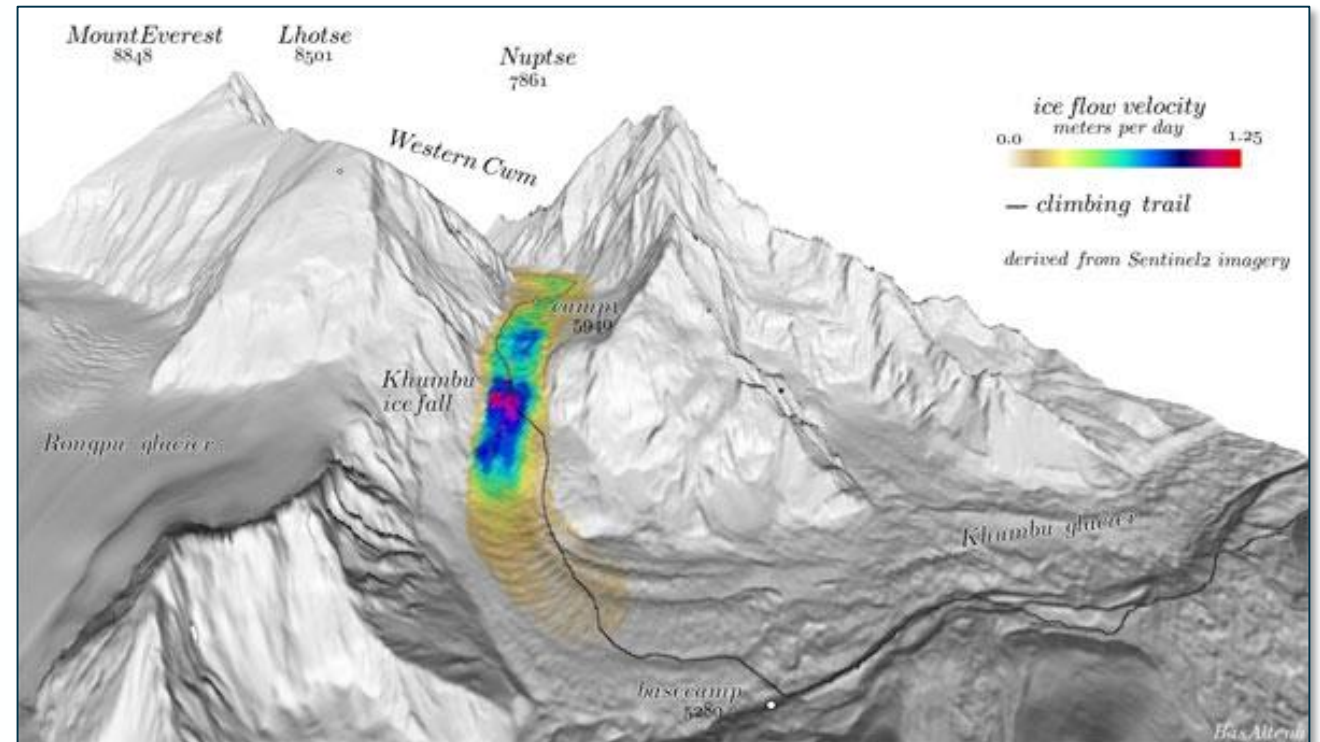


# Sentinel-2 monitors glacier icefall

- Researchers from the University of Oslo extract the flow velocity of Khumbu icefall in the Nepalese mountains, from a collection of Sentinel-2 data — helping climbers ascend Mount Everest.



*Climbers in the Khumbu icefall on Mount Everest  
(Christian Kober/Robert Harding World Imagery/Corbis)*

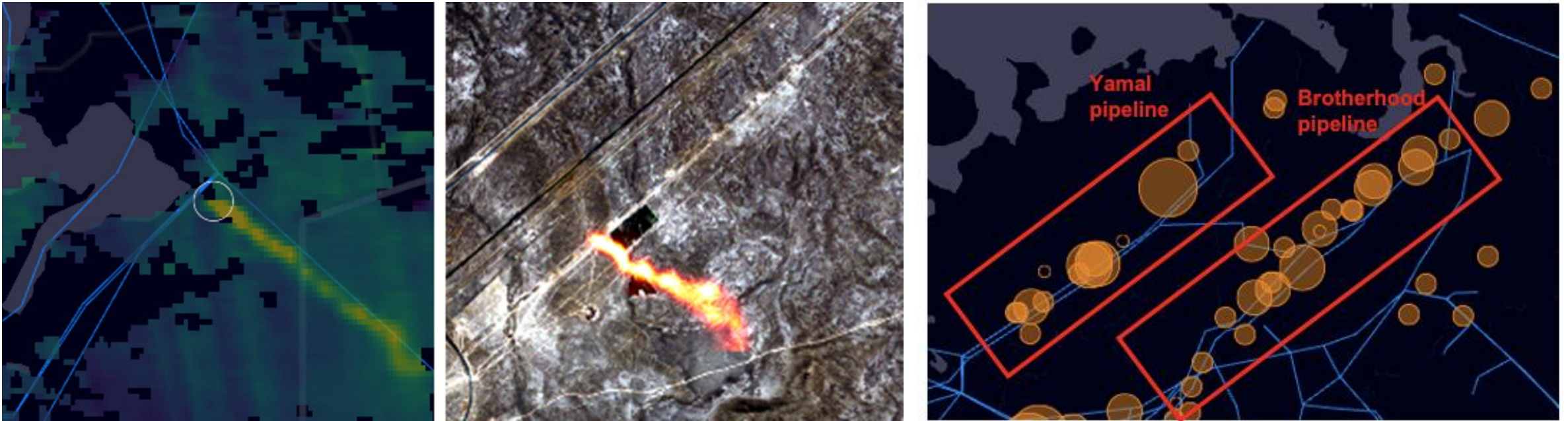


*Copyright: Bas Altena, University of Oslo. Contains modified Copernicus  
Sentinel data (2020)*

<https://sentinel.esa.int/web/sentinel/missions/sentinel-2/news/-/article/copernicus-sentinel-2-monitors-glacier-icefall-helping-climbers-ascend-mount-everest>

# Sentinel-2 mapping high-resolution methane emissions

- Sentinel-2 used to detect individual methane plumes leaking from natural gas pipelines around the globe.

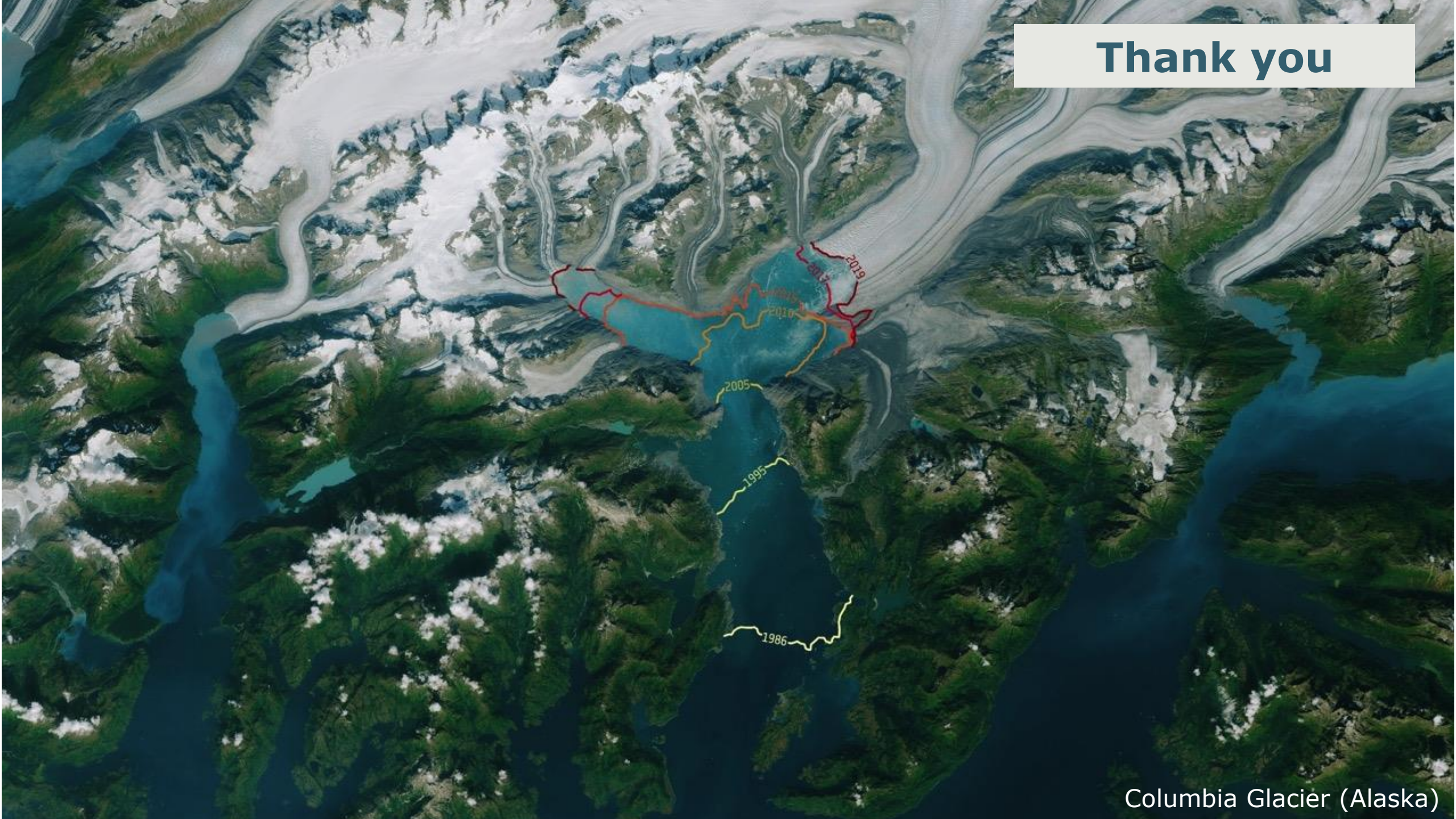


*Copyright: Contains modified Copernicus Sentinel data (2020) processed by Kayrros*

[https://www.esa.int/Applications/Observing\\_the\\_Earth/Copernicus/Sentinel-5P/Monitoring\\_methane\\_emissions\\_from\\_gas\\_pipelines](https://www.esa.int/Applications/Observing_the_Earth/Copernicus/Sentinel-5P/Monitoring_methane_emissions_from_gas_pipelines)



**Thank you**



Columbia Glacier (Alaska)